

Forensic Nursing Handout for PPT presentation

<https://www.dshs.texas.gov/facilities/sexual-assault-information.aspx>

<https://etcc.org/>

<https://cacsmitthcounty.org/>

<https://tcfv.org/>

<https://www.strangulationtraininginstitute.com/>

https://www.facs.org/-/media/files/quality-programs/trauma/tqip/abuse_guidelines.ashx

<https://www.cdc.gov/violenceprevention/childabuseandneglect/acestudy/index.html>

<https://www.youtube.com/watch?v=XHgLYI9KZ-A&list=PL1si4MpwXKA9Iw16NzETUoYeteCOAAalx&index=3&t=1s>

<https://www.youtube.com/watch?v=95ovIJ3dsNk&t=1s>

<https://www.acesaware.org/>

<https://oversight.house.gov/legislation/hearings/identifying-preventing-and-treating-childhood-trauma-a-pervasive-public-health>

<https://www.startbybelieving.org/home/>

<https://www.youtube.com/watch?v=jz1g1SpD9Zo>

<https://www.strandsquared.com/the-certified-feti-program/>

<https://www.youtube.com/watch?v=4-tcKYx24aA>

<https://www.youtube.com/watch?v=aJ-OE55q1gU>

<https://www.ncirs.gov/pdffiles1/nij/250384.pdf>

<https://www.ncirs.gov/pdffiles1/ovw/241903.pdf>

<https://www.justice.gov/ovw/file/846856/download>

<https://nursing.tamu.edu/cefn/index.html#tab-panel-4>

<https://nursing.tamu.edu/documents/txecp-final-08212019.pdf>

<https://nursing.tamu.edu/documents/lea-sae-request-form-fillable-08272019.pdf>

<https://www.youtube.com/watch?v=1ikXim4wevc>

<https://www.youtube.com/watch?v=fBQnQTKhsq4&t=4s>

<https://vimeo.com/244718411>

<https://www.forthesilent.org/>

<http://taasa.org/>

<https://www.rainn.org/>

<https://1in6.org/>

<https://1in6.org/get-information/bristlecone/>

https://www.youtube.com/watch?time_continue=7&v= 2YJXXgJMqA

<https://www.d2l.org>

<https://www.forensicnurses.org/>

<http://www.endthebacklog.org/>

www.tendacademy.ca

FORENSIC NURSING
Rebecca Fears RN, CEN, SANE-A, CA-CP SANE
Forensic Nurse Coordinator, UT Health Tyler Texas

pretest

1. Is there a difference between sexual assault and rape?	5. What is a frenulum?
2. What is the age of consent in Texas?	6. What is a hyman?
3. Are we a boyfriend state?	7. What is a virgin?
4. Who can do a sexual assault exam?	8. Can a male be sexually assaulted by a female?
	9. How long does it take to die from strangulation?

What is a Medical-Forensic Exam? And Who/where is you SANE Nurse?

- Texas law and what you should know.
- The Multitude of decisions a Trauma Victim must make for their care.
- What Grey's Anatomy and SVU get wrong every time.
- When do you call for an Advocate?
- Are we safe?

Like any other patient in the Emergency Room – Immediate Medical Concerns come first.

CABC

Triage as Level 2

TIME FRAMES for Evidence Collection

- Old Texas Law ..72 HOURS
- Texas Law96 HOURS
- Science120 HOURS (TX-HB 616, 9/2019)
- Military168 HOURS
- Clinical Forensic Medicine, Sexual Assault and Semen Persistence, page 399, 19 days – cervical os

Time frame for Medical Care?



Medical Care for Victims

<p>Adults</p> <ul style="list-style-type: none">• There is not expiration for Medical Care!• Where do they receive care?• Does that provider feel comfortable discussing sexual assault?• ACOG vs their PCP• Length of time for appointments	<p>Children/@risk adults</p> <ul style="list-style-type: none">• Smith County Children's Advocacy Center• MDT- Multi Disciplinary Team• Chronic Exam• MFHE and LABS• Non-Acute• Out Cry Witness• Contact Children
---	--

For Sexual Assault / Child Sexual Abuse

BIRTH TO 17 – ALWAYS CALL LAW ENFORCEMENT AND MAKE CPS REPORT

TYLER POLICE DEPARTMENT 903-531-1000
CPS- 1-800-252-5400





65 AND OVER – ALWAYS REPORT




Where do they live?
Who has power of attorney?
Are they competent?

18-64 YEAR OLD

NRSA-
NON REPORT SEXUAL ASSAULT EXAM WITH
EVIDENCE COLLECTION (NO INVESTIGATION)

Texas Information Sheet for Victims



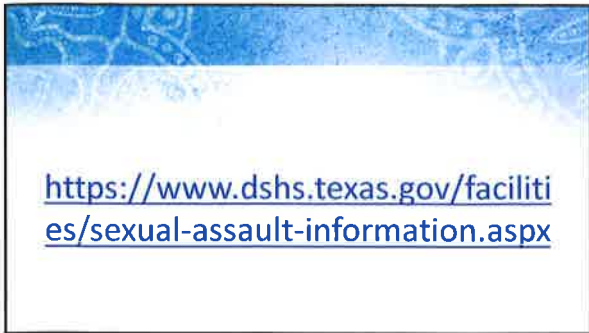
TEXAS
Health and Human
Services

Texas Health and Human Services Commission
Charles Smith
Emergency Director/Deputy

Information Sheet for Sexual Assault Patients

If you are a child, an elderly person, or a disabled individual, the law requires any suspected sexual assault to be reported.

If you are age 18 or older, you may choose to report the sexual assault to law enforcement. You may request a medical forensic exam regardless of whether you choose to report the sexual assault.



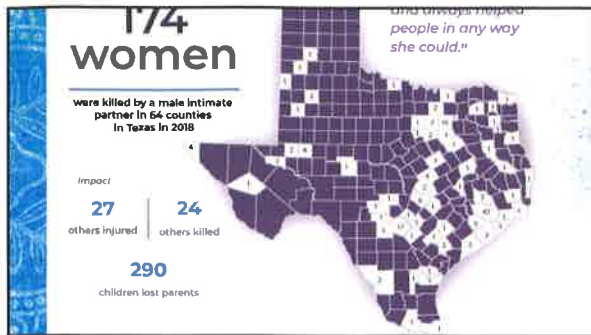


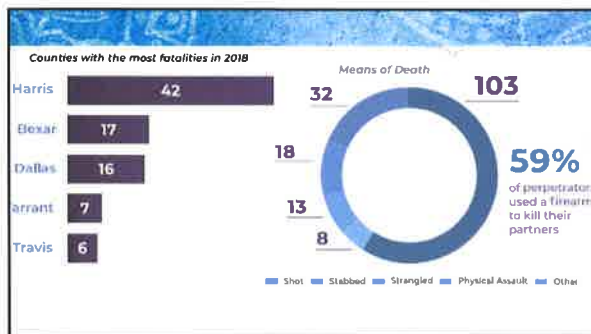


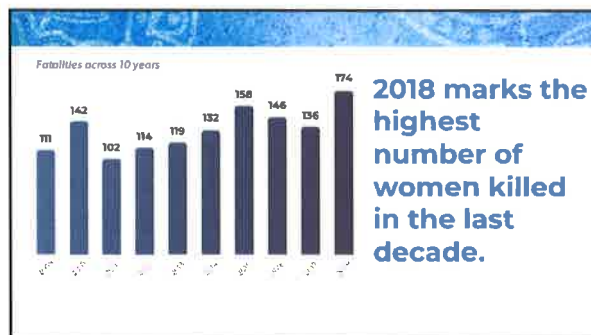










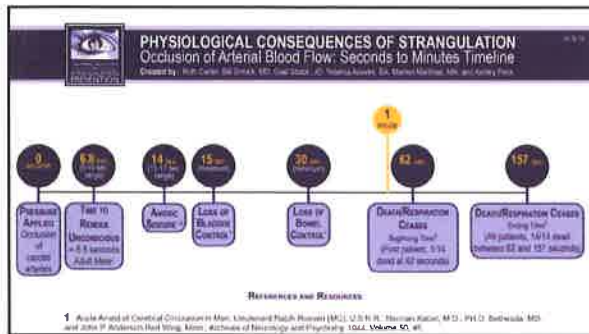


STRANGULATION and/or SUFFOCATION DISCHARGE INFORMATION

Because you have reported pressure applied to your neck and/or difficulty breathing, we are providing you with some important discharge information.

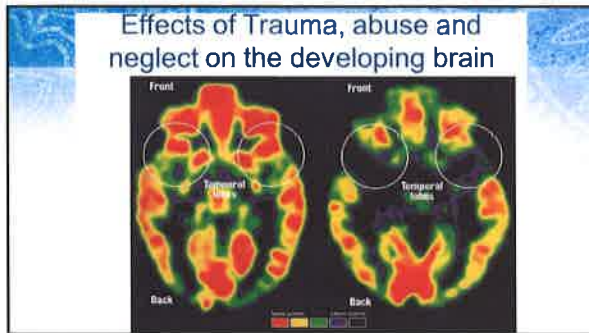
- After a choking, strangulation and/or suffocation assault, victims can experience **delayed symptoms of internal injuries.**
- Symptoms of internal injuries may appear quickly or develop over a few days after the event. **Internal injuries can be serious and even fatal.**

- It is important that someone you trust stays with you for the **next 24-72 hours** to help you monitor your signs and symptoms.
- We recommend you **keep a list of your symptoms** to share with your healthcare provider and advocate.



INFORMED CONSENT PLAN OF CARE





What would Trauma-Informed care look like for our victim?

- We don't have treatment guidelines yet.
- Consent, Assent, Understanding
- Assessment Skills
- **SEEN, HEARD AND RESPECTED.**

ACS TRAUMA QUALITY PROGRAMS
BEST PRACTICES GUIDELINES
FOR TRAUMA CENTER
RECOGNITION OF
Child Abuse, Elder Abuse,
and Intimate Partner Violence
https://www.aacs.org/-/media/files/quality-programs/trauma/tqip/abuse_guidelines.ashx



Trauma is cumulative and Dose Dependent
Trauma is cumulative and Dose Dependent
Trauma is cumulative and Dose Dependent
Trauma is cumulative and Dose Dependent
Trauma is cumulative and Dose Dependent
Trauma is cumulative and Dose Dependent
Trauma is cumulative and Dose Dependent
Trauma is cumulative and Dose Dependent

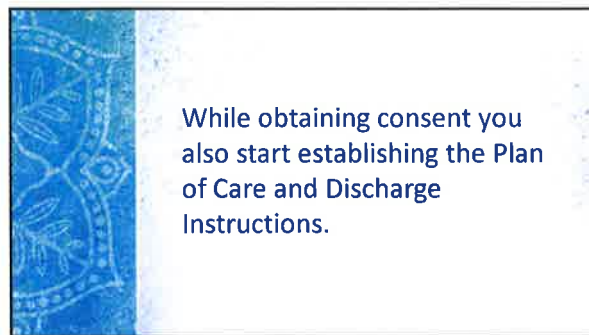
<https://www.youtube.com/watch?v=XHgtYI9KZ-A&list=PL1s4MpwXKA9lw16NzETUoYeteCDAaAa&index=3&t=1s>

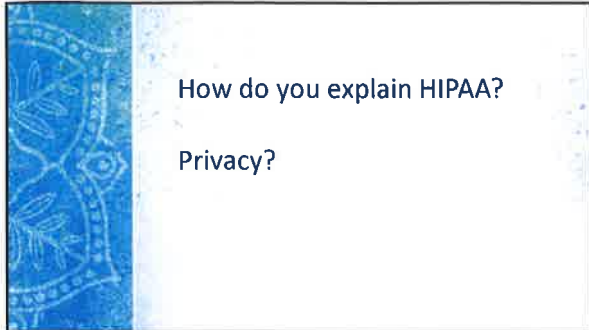
ACES

Adverse childhood experiences

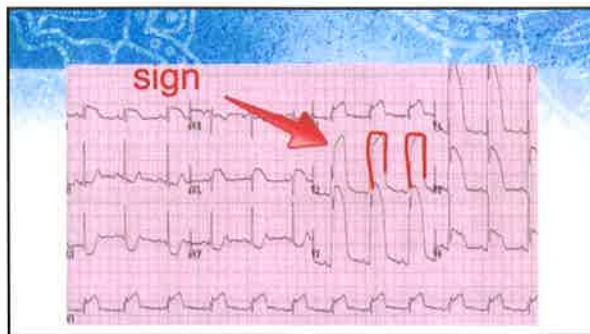













START BY BELIEVING..

Start by Believing



IT'S TIME TO START BY BELIEVING

<https://www.startbybelieving.org/home/>



I sit down.
I slow down.
And I listen....

<https://www.youtube.com/watch?v=jz1g15s092o>



What decisions do you need to make?

- Do you need/want medical care?
- Do you want evidence Collection?
 - If yes what parts?
 - All?
 - Some?
- Colposcopy and Digital Photos?
- STD/STI testing?
- STD/STI Prophylaxis?
- HIV Prophylaxis?
- Emergency Contraception?
- Do you want the Advocate to stay with you during the exam?
- Do you want your mother? BFF? Sister? Father?

The History of the Assault
Obtained for the purpose of diagnosis and treatment.

So What is a History of the Assault?


- The patients actual words in quotes.
- Exception the hearsay laws.
- Don't interrupt.
- Be patient.
- Don't reorganize the story or re-word.
- FETI
- (and yes it can get very graphic)

FETI – Forensic Experiential Trauma Interview

- <https://www.strandsquared.com/the-certified-feti-program/>
- Getting a history of a traumatic event without traumatizing the victim
- Victim Centered and Trauma Informed
- The victim and the history “drive the exam”. This is how I know where to look for evidence.
- And it’s easy


<https://www.youtube.com/watch?v=402273340d0>

TRAUMA AND THE BRAIN



**“TRAUMA COMES BACK AS
a reaction,
NOT A MEMORY”.**

-BESSEL VAN DER KOLK

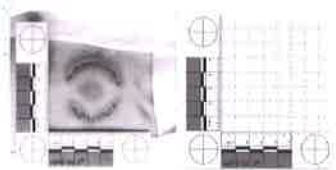






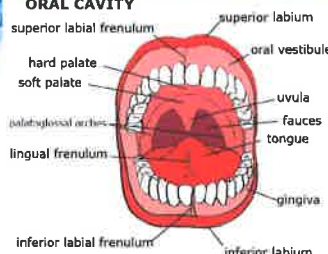


A clear and accurate representation of injuries seen during the exam.



Designed by the American Board of Forensic Odontology (ABFO), this scale has become the standard for bitemark measurement and photography. The incorporation of three circles is useful in helping to compensate for distortion resulting from oblique camera angles.

ORAL CAVITY



superior labium
superior labial frenulum
oral vestibule
hard palate
soft palate
uvula
palatoglossal arches
fauces
tongue
lingual frenulum
gingiva
inferior labial frenulum
inferior labium

Obtaining a Forensic Sample






IDENTIFY patient and area to be swabbed
PHOTOGRAPH with and without scale (rule of 3=4)
INDICATION - History or Lack of History

OPEN package without contamination
SWAB area, if area is wet – swab the area with dry swabs, if area is dry swab with moistened swabs
DRY per you local policy avoiding any contamination
PACKAGE and label per you local policy

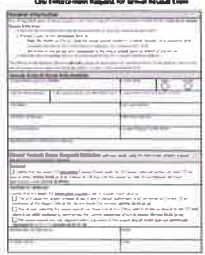
PALPATE with clean gloves
TREATMENT as indicated, X-ray if indicated/ordered, CLEAN
PHOTOGRAPH with and without scale again
Dressing / DTaP / Antibiotics all as indicated/ordered.

It is all in the details...

- Alternate light source
- Behind the ears
- In the hair
- All three oral frenulums



LEA Forensic Request for Sexual Assault Exam



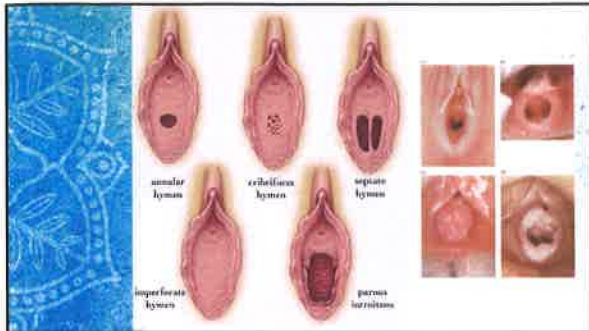
<https://nursing.tamu.edu/documents/lea-sae-request-form-fillable-08272019.pdf>

DETAILED ANO-GENITAL EXAM
WITH COLPOSCOPY AND DIGITAL PHOTOGRAPHY











DIFFERENT TYPES OF FEMALE GENITAL MUTILATION

TYPE 1
CLITORIDECTOMY

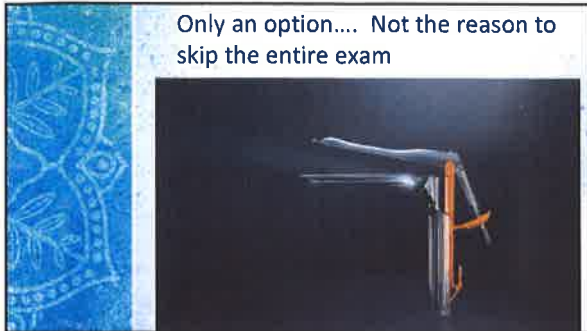
TYPE 2
EXCISION

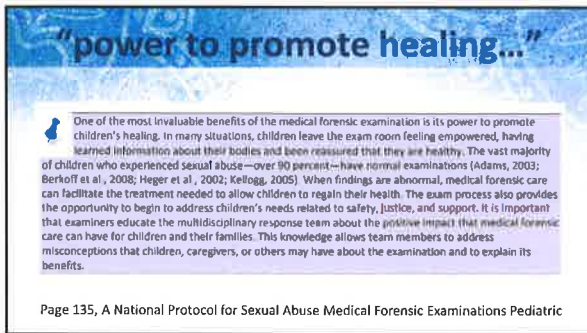
TYPE 3
INFIBULATION

TYPE 4
THIS INCLUDES ALL OTHER HARMFUL PROCEDURES TO THE FEMALE GENITALIA FOR NON-MEDICAL PURPOSES

TIP LINE: 1-866-347-2423 (from U.S. or Canada) or email HRV.ICE@ice.dhs.gov

1996: 18 U.S. Code § 116 'Female Genital Mutilation' is enacted











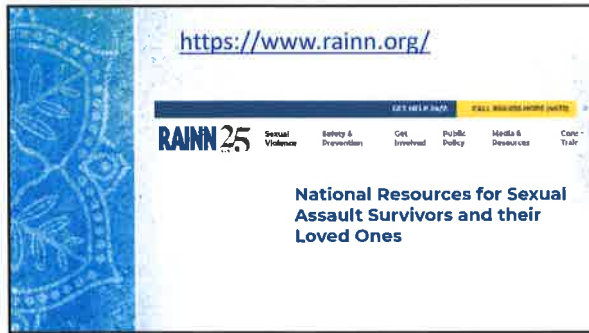


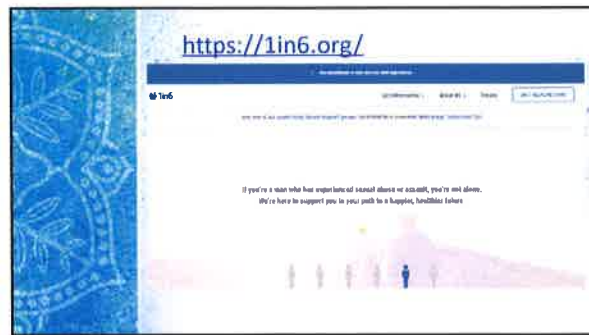












<https://lin6.org/get-information/bristlecone/>

Male Survivor Stories – The Bristlecone Project

Men's lives are made of words, and they are often left unspoken and unshared. The result is that millions of men live without the emotional and physical support they need to move forward. This national grassroots campaign, called the Bristlecone Project, was founded by Dr. David L. Coates in 2011.

The Bristlecone Project is a national organization that provides a safe space for men to be heard by peers and share their stories. They are a community of men who are brave enough to be vulnerable and share their stories. They are men who are not just the past, but who walk forward into the future. (David L. Coates, PhD, Director of the Project)



https://www.youtube.com/watch?time_continue=7&v=2YJXxgIMq8

<https://www.d21.org/>

TEXT LIGHT TO 741741
OR CALL 866FOR LIGHT

The 866FOR LIGHT is a free, confidential, 24-hour helpline for men who are struggling with mental health issues. It is a safe space for men to talk to someone who can help them get the support they need. For more information, visit www.d21.org.

POWERED BY LIGHT







Post Test

1. Is there a difference between sexual assault and rape?
2. What is the age of consent in Texas?
3. Are we a boyfriend state?
4. Who can do a sexual assault exam?
5. What is a frenulum?
6. What is a hyman?
7. What is a virgin?
8. Can a male be sexually assaulted by a female?
9. How long does it take to die from strangulation?

Low Impact Debriefing: 4 steps
www.tendacademy.ca

<p>1. SET SCENARIOS</p> <p>Have you ever been asked to help find friends on Facebook, or a friend who might be thinking about hanging out with you? Or being in situations that become uncomfortable by the situation or being with people who seem to be doing things you don't want to do? Or being asked to help someone who is in a difficult situation? Or being asked to help someone who is in a difficult situation?</p>	<p>2. FOR WARNING</p> <p>If you both feel good about it, it's fine to go on. If you both feel good about it, it's fine to go on. If you both feel good about it, it's fine to go on. If you both feel good about it, it's fine to go on.</p>
<p>3. SUPPORT</p> <p>This is your chance to help someone who is in a difficult situation. This is your chance to help someone who is in a difficult situation. This is your chance to help someone who is in a difficult situation.</p>	<p>4. LIMIT MESSAGE</p> <p>This is your chance to help someone who is in a difficult situation. This is your chance to help someone who is in a difficult situation. This is your chance to help someone who is in a difficult situation.</p>



UT Health
Texas

Behavioral Health, Inc.
CEN, LMSW, C-OP-00000

1000 E. 15th Street
Austin, TX 78702
512.477.1000
www.uthealthbehavioral.com
