

**THE STATE OF
JUVENILE
PROBATION
ACTIVITY
IN TEXAS**

Calendar Year 2001

Texas Juvenile
Probation Commission



TJPC Board Members

Honorable Robert Brotherton
Chairman
Wichita Falls, Texas

Betsy Lake
Vice-Chairman
Houston, Texas

Michael E. Cantrell
Garland, Texas

Honorable Mary Craft
Houston, Texas

Keith Kuttler
Bryan, Texas

Lyle T. Larson
San Antonio, Texas

William E. Miller
Lubbock, Texas

Byron K. Reed
Plano, Texas

Carlos Villa
El Paso, Texas

Advisory Council Members

Thomas Chapmond
Tom Cowan
David Hagler
Patricia Hayes
Pama Hencerling
Jane Anderson King
Lois Loeffler
Maxine Longoria
Kenneth Martindale
Estela Medina
Israel "Buddy" Silva
Larry Thorne

THE STATE OF JUVENILE PROBATION ACTIVITY IN TEXAS



Statistical and Other Data on the Juvenile Justice System in Texas for Calendar Year 2001

Texas Juvenile Probation Commission
Vicki Spriggs, Executive Director
P.O. Box 13547
Austin, Texas 78711-3547

4900 North Lamar, 5th Floor
Telephone 512/424-6700, TDD (512) 424-4000
FAX (512) 424-6717

*Additional copies of this and other publications
may be found on the TJPC Web Site at
www.tjpc.state.tx.us*

Published July 2002

The Texas Juvenile Probation Commission, an equal opportunity employer, does not discriminate on the basis of race, color, national origin, sex, religion, age or disability in employment or the provision of services, programs or activities. In compliance with the

Acknowledgment

The Texas Juvenile Probation Commission expresses its appreciation to the many juvenile probation officers, juvenile court judges and others whose prompt and continued submission of their statistical and other data have made this report possible.



Table of Contents

Foreword	4
Movement of Juvenile Referrals in 2001	
Texas Juvenile Probation System in 2001	7
Introduction	
Juvenile Boards	
Juvenile Probation Departments	
Juvenile Population	
Juvenile Referral Activity in 2001	15
Texas Juvenile Crime Clock – Delinquent Juvenile Crime in 2001	
Referral Activity	
Offense Distribution	
Profile of Offenders	
Referral Rates	
Referral History	
Re-Contact Rates	
Referral and Population Projections	
Juvenile Disposition and Supervision Activity in 2001	25
Juvenile Disposition Activity	
Distribution of Dispositions by Offense Severity and Race	
Beyond Juvenile Probation	
Supervision Workload Activity	
Juvenile Detention and Residential Placement Activity in 2001	33
Detention Activity	
Residential Placement Activity	
Registry of Secure Facilities	
Glossary of Juvenile Justice Terminology	37
Appendices (Statewide Summary and County-Specific Details)	41
Juvenile Referral Activity	
Juvenile Disposition Activity	
Juvenile Supervision Activity	
Juvenile Detention and Residential Placement Activity	



Foreword

The Texas Juvenile Probation Commission's (TJPC) annual activity report provides information regarding the magnitude and nature of juvenile criminal activity and the juvenile probation system's response. This information is offered to assist the state's effort to improve the juvenile justice system and reduce juvenile crime in Texas.

During calendar year 2001, police agencies in Texas processed 141,836 arrests of juveniles between the ages of 10 and 17. Of this number, 53,859 were warned and released, handled in justice and municipal courts, or diverted, and 87,977 were referred to juvenile probation departments. Social agencies, parents, schools, and the Texas Youth Commission (TYC) referred another 25,157 cases, for a total of 113,134 referrals to juvenile probation departments.

This is a decrease of only 12 (0.01%) total referrals from the previous year. While extremely minimal, this was the sixth consecutive decrease of referrals in Texas. Total delinquent offenses increased 1% from 2000; however, within the delinquent category, violent offense referrals remained stable. Total CINS offense referrals decreased 5%.

All of the 254 counties in Texas received services through 164 juvenile probation departments in 2001. These departments were staffed by a total of 6,586 employees, 1,911 of whom carried a probation caseload.

Counties registered and operated 48 secure pre-adjudication residential facilities, eight holdover facilities, and 28 secure post-adjudication residential facilities in 2001. In addition to the county-operated facilities, private contractors provided services for juveniles in 11 pre-adjudication facilities and 13 post-adjudication secure facilities. These facilities provided a combined total of 2,230 pre-adjudication, 64 holdover, and 2,344 post-adjudication beds.

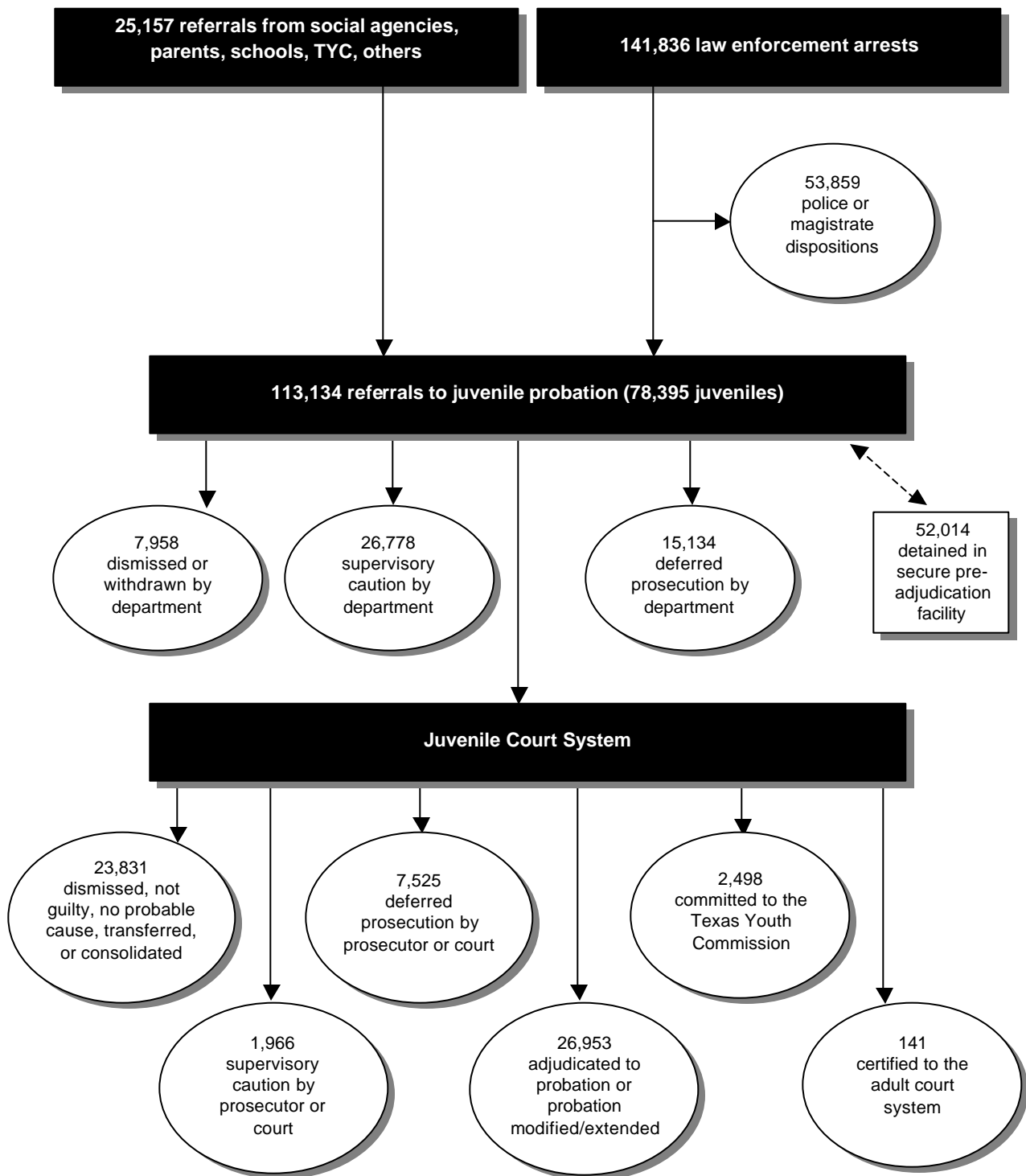
In 2001, 52,014 juveniles were held in secure detention facilities prior to adjudication hearings. Approximately 31% of those detained were released in less than one day. An additional 9,932 placements were made to residential facilities, generally following the disposition.

Juvenile probation departments disposed of 7,958 cases by dismissing or withdrawing the complaint, provided supervisory caution to 26,778 referrals, and initiated 15,134 deferred prosecutions.

Juvenile prosecutors, independently or through their juvenile courts, entered 1,966 supervisory cautions, 7,525 deferred prosecutions, and 26,953 new or modified probation orders. Juvenile courts also committed 2,498 juveniles to the TYC and certified 141 juveniles to stand trial as adults. An additional 23,831 cases were refused prosecution, dismissed, consolidated, or otherwise disposed.



Movement and Dispositions of Juvenile Referrals in 2001*



* Note: The chart on this page illustrates referrals that occurred in calendar year 2001, and dispositions that occurred in 2001. The juveniles who represent these numbers are not necessarily one in the same (i.e., a juvenile can be referred during one year and disposed of in another). Therefore, the number of referrals does not equal the number of dispositions.





Texas Juvenile Probation System in 2001





Texas Juvenile Probation System

Introduction

TJPC collects statistical data relating to juveniles referred to the juvenile justice system from the 164 probation departments covering all Texas counties. Beginning January 1999, each department was required to submit individual case file data in an electronic format, replacing the aggregate reporting methods used in previous years. In addition, TJPC periodically surveys the departments to obtain supplemental information.

Caution should be used in drawing general conclusions from the statistics. The data portray neither everything juvenile probation departments or courts do, nor how much time they spend on activities not represented by the statistics.

At least three factors are not represented in the juvenile probation activity statistics and should be considered when evaluating them:

1. The juvenile justice system operates under the rules and authority of Title 3 of the Texas Family Code. Emphasis is placed on the rehabilitation of the juvenile through accountability, guidance, counseling, diversion, and treatment. Many of the cases statistically reported as being disposed as *supervisory caution* or *dismissed or otherwise disposed*, in fact occasion rehabilitative efforts on the part of the juvenile probation system.
2. A number of the juvenile probation officers serve both adult and juvenile capacities and often operate under widely varying authorities and policies.

3. Juvenile probation officers in multi-county departments spend more time traveling than do officers in single-county jurisdictions.

Juvenile Boards

State law requires each county to have a juvenile board. Some of these boards govern multiple counties. In 2001, there were 170 juvenile boards in Texas. Each board, consisting of district and county judges, is responsible for overseeing the operations of the juvenile justice system in that county, which includes designating juvenile judges, appointing the chief juvenile probation officer, and setting the policy and budget for the juvenile probation department. TJPC provides funding and technical assistance to juvenile boards.

Funding. TJPC is the primary agency through which state funding for juvenile justice is channeled to the counties. During fiscal year 2001, TJPC sent more than 112 million dollars to county juvenile boards for their local probation departments. Total revenues appropriated to TJPC increased nearly seven percent from the year before, from \$107,885,022 in fiscal year 2000 to \$115,214,018 in fiscal year 2001.

State funds accounted for about 29 percent of total funding for juvenile probation in fiscal year 2001. Local commissioner's courts provided approximately 64 percent of the total from county revenues. Juvenile boards work closely with the commissioner's courts to set budgets for the operation of the local juvenile probation departments using both local and state



funds. The remaining seven percent of funds was from federal and other entities.



Juvenile Probation Departments

Structure. Juvenile probation departments implement the policies of juvenile boards and deliver services to juveniles referred to juvenile courts. There are 121 single-county departments and 44 multi-county departments in Texas. Multi-county departments range from two to six counties. While 18 departments served both adult and juvenile probationers, 13 of these combined departments used separate juvenile probation officers.

Certification of Officers. TJPC requires that all Texas juvenile probation, detention, and corrections officers are certified as having earned necessary academic degrees and completed 40 hours of approved continuing education annually. Training is provided by TJPC for juvenile

judges and all levels of juvenile probation personnel to count toward the necessary hours of continuing education.

During 2001, TJPC certified 521 new juvenile probation officers, 1,515 detention officers, and 1,287 corrections child-care workers. An additional 1,543 existing officers were also re-certified.

Salaries and Staffing. Based on data received from local departments in the annual Resource Report, there were 6,586 salaried personnel in juvenile probation departments across Texas at the end of 2001. This represents 125 more employees than in 2000. Eight of the departments had only one employee (a Chief Juvenile Probation Officer). The following table shows the breakdown of department staff and their salaries.

Juvenile Probation Staff Size and Salaries in 2001

Position	# in Texas	Average Salary	Low Salary	High Salary
Chief Juvenile Probation Officer	164	\$53,088	\$20,436	\$125,129
Supervisory Admin. Probation/Detention Staff	631	\$41,135	\$19,538	\$108,456
Certified ISP Officers	227	\$32,397	\$20,000	\$55,282
Certified Juvenile Probation Officers	1,525	\$29,937	\$17,939	\$55,476
Uncertified Juvenile Probation Officers	54	\$25,942	\$18,100	\$31,944
Certified Juvenile Detention Officers	1,136	\$24,174	\$12,105	\$46,032
Uncertified Detention Workers	101	\$20,234	\$15,000	\$30,493
Certified Corrections Officers	568	\$25,586	\$15,700	\$45,760
Uncertified Corrections Officers	27	\$20,314	\$15,700	\$29,977
JJAEP Staff (not counted above)	82	\$27,266	\$9,958	\$52,797
Dept.-Operated Residential Program Staff	188	\$29,751	\$14,448	\$52,320
Clerical Staff	562	\$22,523	\$11,000	\$44,200
Temporary Staff	72	\$17,500	\$12,480	\$21,816
Other Full-Time Staff	518			
Part-Time Staff	731			
Total Staff	6,586			



Caseloads. Data received in the Resource Report indicate that the average daily caseload per caseload-carrying officer in Texas juvenile probation departments ranges from two to 65 juveniles, with a statewide average of 29. Some departments, primarily larger-sized ones, employ officers that carry specialized caseloads of one specific type of case only. For these specialized officers, the average daily caseload for deferred prosecution cases was 47, adjudicated probation was 30, and intensive supervision probation was 15.

Juvenile Justice and Education. Juvenile justice alternative education programs – also known as JJAEPs – provide continued education services for youth that have been expelled from the public school system. JJAEPs are mandated in counties with populations of more than 125,000.

In school year 2000/2001, there were 22 mandatory juvenile justice alternative education programs (JJAEPs) operating in Texas. In addition, nine JJAEPs operated with state grant funds in counties with populations of less than 125,000. Using state funds, the 31 JJAEPs had 7,182 student entries into the programs. Approximately 72% of the students in state-funded programs were expelled from the school districts for discretionary reasons, most commonly for serious or persistent misconduct.

Another 163 youth were served in non-mandated, non-state-funded JJAEPs operated by seven juvenile probation departments.

Restitution. Nearly every juvenile probation department utilized both

community service restitution and financial restitution in 2001. Nearly 36,000 juveniles provided over 829,000 hours of community service in response to the offenses for which they were referred. Additionally, more than 27,000 juveniles paid over \$2.2 million statewide in financial restitution.

Substance Abuse Services. Drug or alcohol tests were utilized in nearly all (98%) of the juvenile probation departments and were administered on approximately 54,608 referrals statewide. Substance abuse prevention or counseling services were provided to approximately 19,268 referrals in 2001. At the same time, 4,264 referrals received TCADA-licensed non-residential treatment and 1,310 received TCADA-licensed residential treatment for substance abuse issues.

Departments spent approximately \$19 million on substance abuse treatment services. Still, approximately 3,815 referrals needed substance abuse services or treatment but did not receive any due to insufficient resources.

Mental Health Services. Juvenile probation departments indicated on the annual Resource Report that approximately 19,432 juveniles were in need of mental health services during 2001. However, during this period, only approximately 12,195 juveniles received the services.

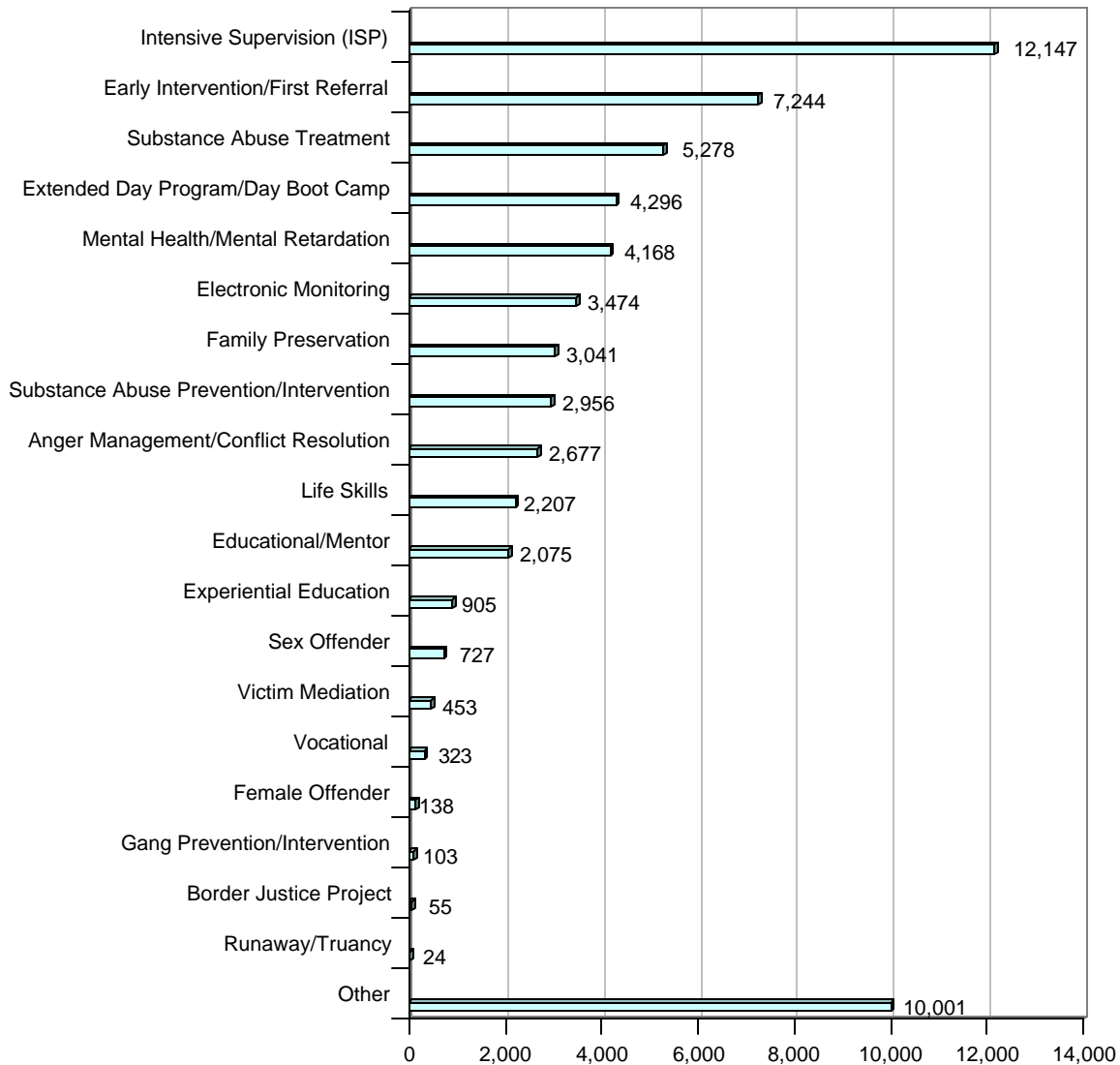
Sex Offender Services. During 2001, approximately 373 juveniles received in-patient sex offender treatment, and 1,153 juveniles received out-patient treatment.



Programs. Each juvenile probation department provides at least basic supervision services. Beyond this, however, 161 of the 164 juvenile probation departments also operated additional non-

residential programs to provide services for certain juveniles under supervision. The table below shows the extent to which these departments operated programs beyond basic supervision during 2001.

Juveniles Served by Juvenile Probation Department-Operated Programs in 2001



Juvenile Population

The Texas juvenile justice system serves youth between the ages of 10 and 16, and 17 if the offense was committed when the youth was 16 years old or younger. Using the Texas State Data Center projections based on the United States census 2000 population, there were

2,327,745 juveniles in Texas in 2001. The map below illustrates the densest juvenile population areas in the state. The appendix of this report contains population data per county (see Juvenile Referral Activity – County-Specific Details).

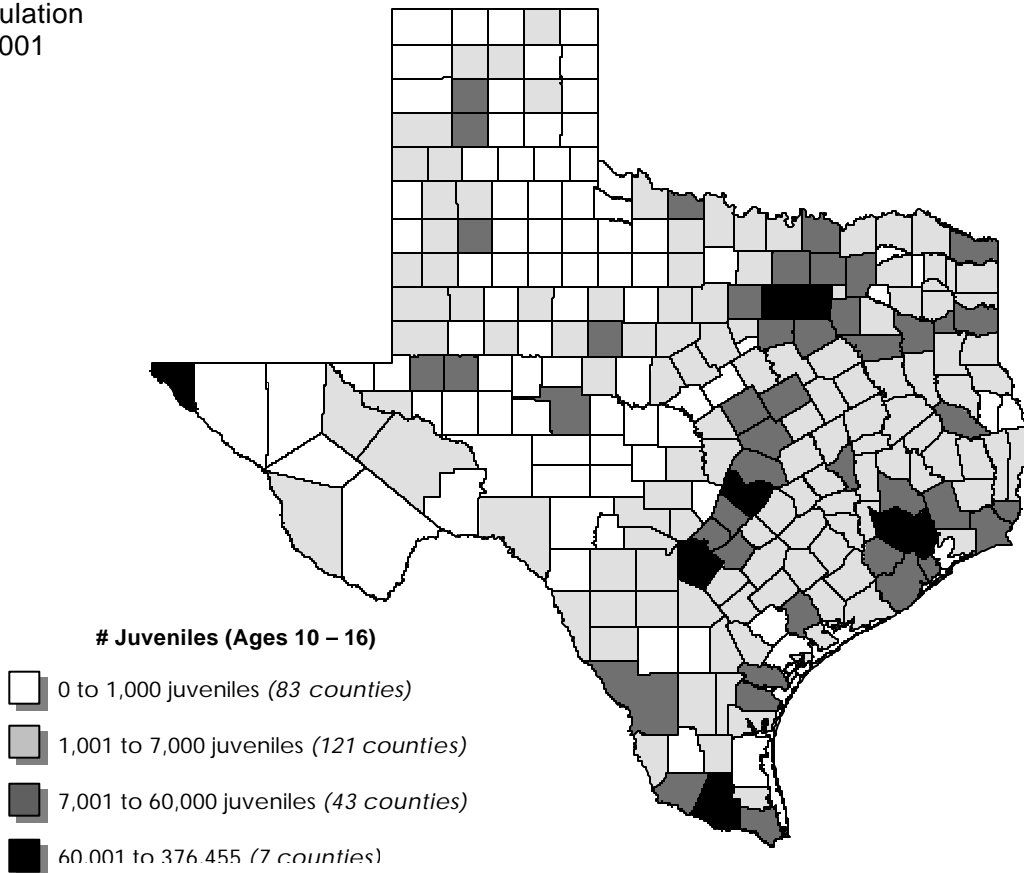
Race and age breakdowns of the projected 2001 figures are as follows:

Juvenile Population by Race and Age in 2001

	Age 10	Age 11	Age 12	Age 13	Age 14	Age 15	Age 16	Total
African American	46,207	46,472	44,449	43,980	43,187	43,156	42,649	310,100
Anglo	147,256	150,076	147,983	149,207	149,430	152,466	151,692	1,048,110
Hispanic	137,024	133,611	127,266	126,658	124,855	124,301	124,939	898,654
Other	10,107	10,133	10,381	10,148	9,868	10,007	10,237	70,881
Total	340,594	340,292	330,079	329,993	327,340	329,930	329,517	2,327,745

Texas
Juvenile
Population
2001

in



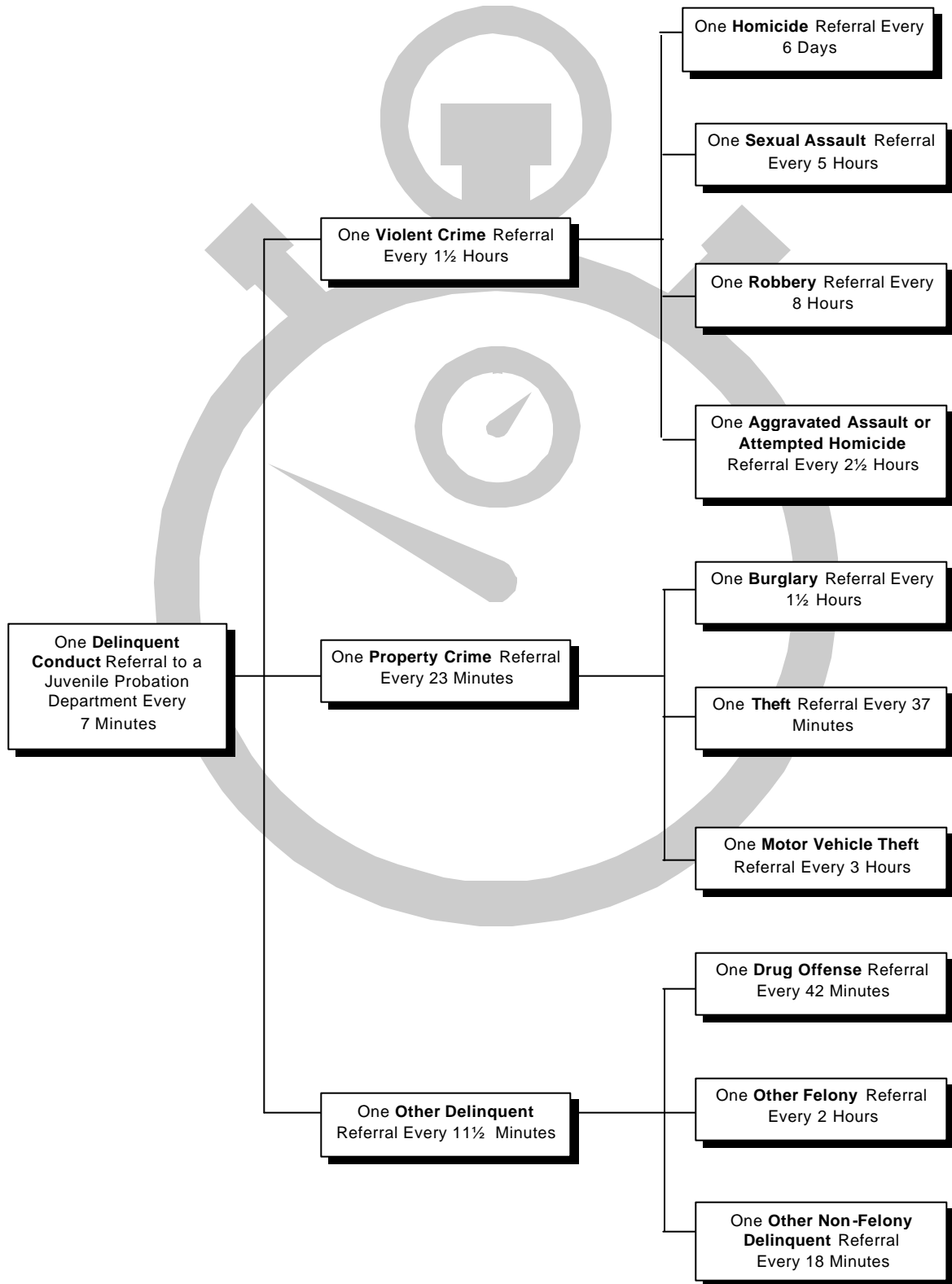


Juvenile Referral Activity in 2001



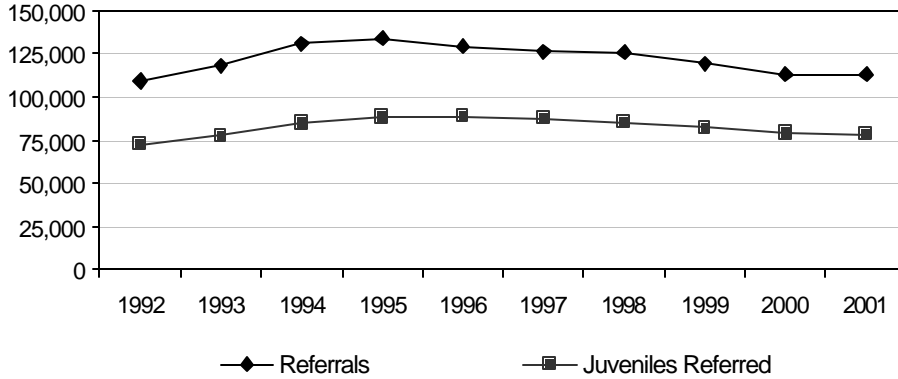


Texas Juvenile Crime Clock – Delinquent Juvenile Crime in 2001



Juvenile Referral Activity

Referrals vs. Juveniles Referred
1992 - 2001



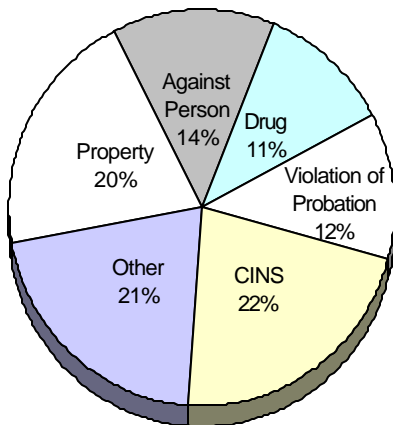
There were 113,134 referrals to juvenile probation authorities in Texas, a decrease of 0.01% from 2000. Though extremely small, this was the sixth consecutive decrease in total referrals since 1995. This decrease occurred while there was an increase (2.2%) in the projected juvenile-aged population based on Texas State Data Center projections.

A youth may be referred to a juvenile probation department for more

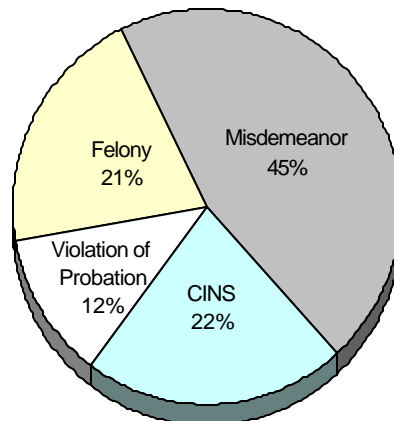
than one offense in a single referral. In this case, the most serious offense counts as the referral. Referrals in 2001 consisted of 143,325 separate offenses, for an average of 1.3 offenses per referral.

The number of juveniles referred also decreased for the fifth consecutive year in 2001, from 79,207 (average of 1.43 referrals per juvenile) in 2000, to 78,393 (average of 1.44 referrals per juvenile) in 2001.

Referrals by Offense Category in 2001



Referrals by Offense Type in 2001



Offense Distribution. As illustrated in the chart below, the percent of total referrals that were for alleged felony offenses has remained consistently at or just over 20 percent during the past three years. Of this number, the percent referred for violent felony offenses has increased very slightly, while the percent of non-violent felony offenses has remained the same.

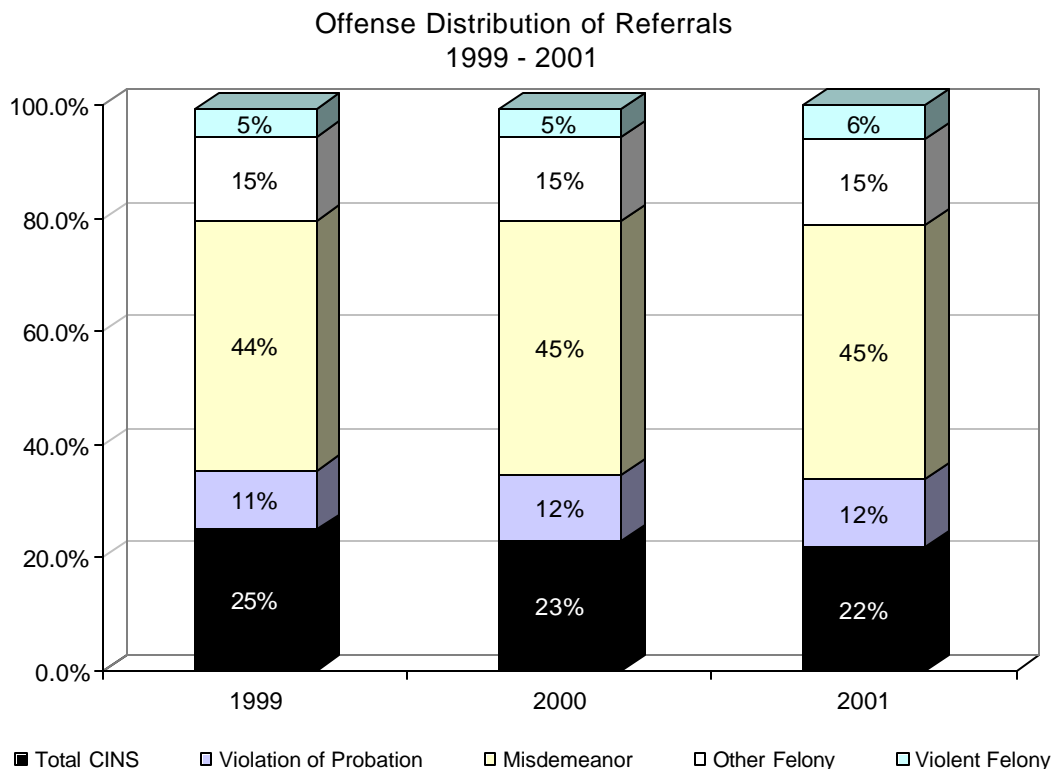
While as a percent of total referrals violent felony referrals slightly increased, the actual number of referrals slightly decreased from 6,346 in 2000 to 6,344 in 2001. Within this category, homicide and attempted homicide referrals decreased 23% and 46% respectively from 2000. At the same time, sexual assault referrals increased 7%. The number of robbery and aggravated assault referrals remained relatively stable.

The category of misdemeanor A & B violations (which also includes contempt of magistrate orders) also remained relatively

consistent as a percent of total referrals over the past three years. Nearly half (45%) of all referrals in 2001 were for these alleged, non-felony delinquent offenses.

Violation of probation order referrals have also remained relatively consistent as a percentage of total referrals. From 2000 to 2001, the actual number of violation of probation order referrals increased 4% from 13,111 in 2000 to 13,664 in 2001.

The number of CINS offense referrals decreased 5%, from 26,116 in 2000 to 24,695 in 2001. As a percent of the total number of referrals, they have consistently decreased over the past three years. Within this category, the number of status offense referrals decreased by over 2%, while the greatest change occurred with misdemeanor C and other non-status CINS offense referrals – a decrease of 12% from 2000.



Profile of Offenders. More than 71% of all referrals in 2001 were male. The proportion of female offenders has gradually increased over the years – 24% one decade ago to 29% in 2001. Females comprised a larger percentage of the less severe offenses. Females committed 24% of all delinquent offenses and 47% of all CINS offenses.

While Anglo youth make up nearly half (45%) of the juvenile population, they accounted for only 35% of the referrals. Hispanic juveniles were the second most populous group (39%) but accounted for the most referrals in 2001, 41%. African American youth constituted 13% of the population and 23% of the referrals.

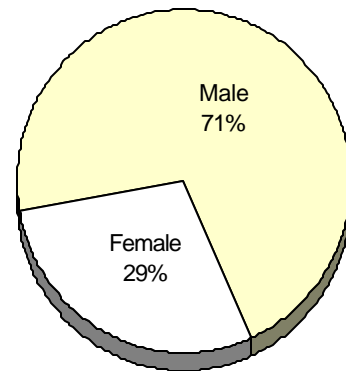
The average age of juvenile referrals was between 14 and 15 years of age. However, sixteen-year-olds were referred to juvenile probation more frequently than any other age.

More than half (57%) of the juveniles referred in 2001 were living with one parent, and one third were living with two parents. Most of the remaining youth lived with other relatives, such as grandparents or an aunt and uncle.

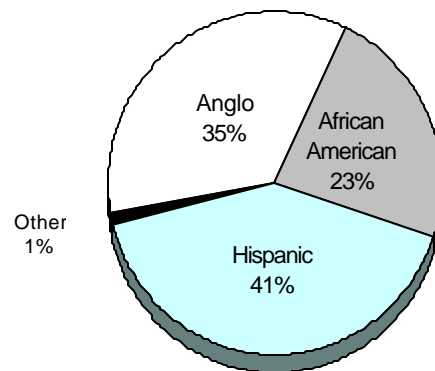
Over eight out of ten juveniles referred were attending regular school. The remaining juveniles were in an alternative education center, had been suspended or expelled, or had dropped out of school entirely.

Police agencies made nearly eight out of ten referrals. Most of the remaining referrals were made by schools, parents, social agencies, or other probation departments.

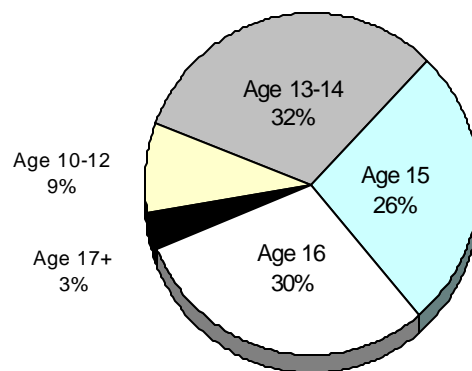
Gender Distribution of Referrals



Race Distribution of Referrals



Age Distribution of Referrals

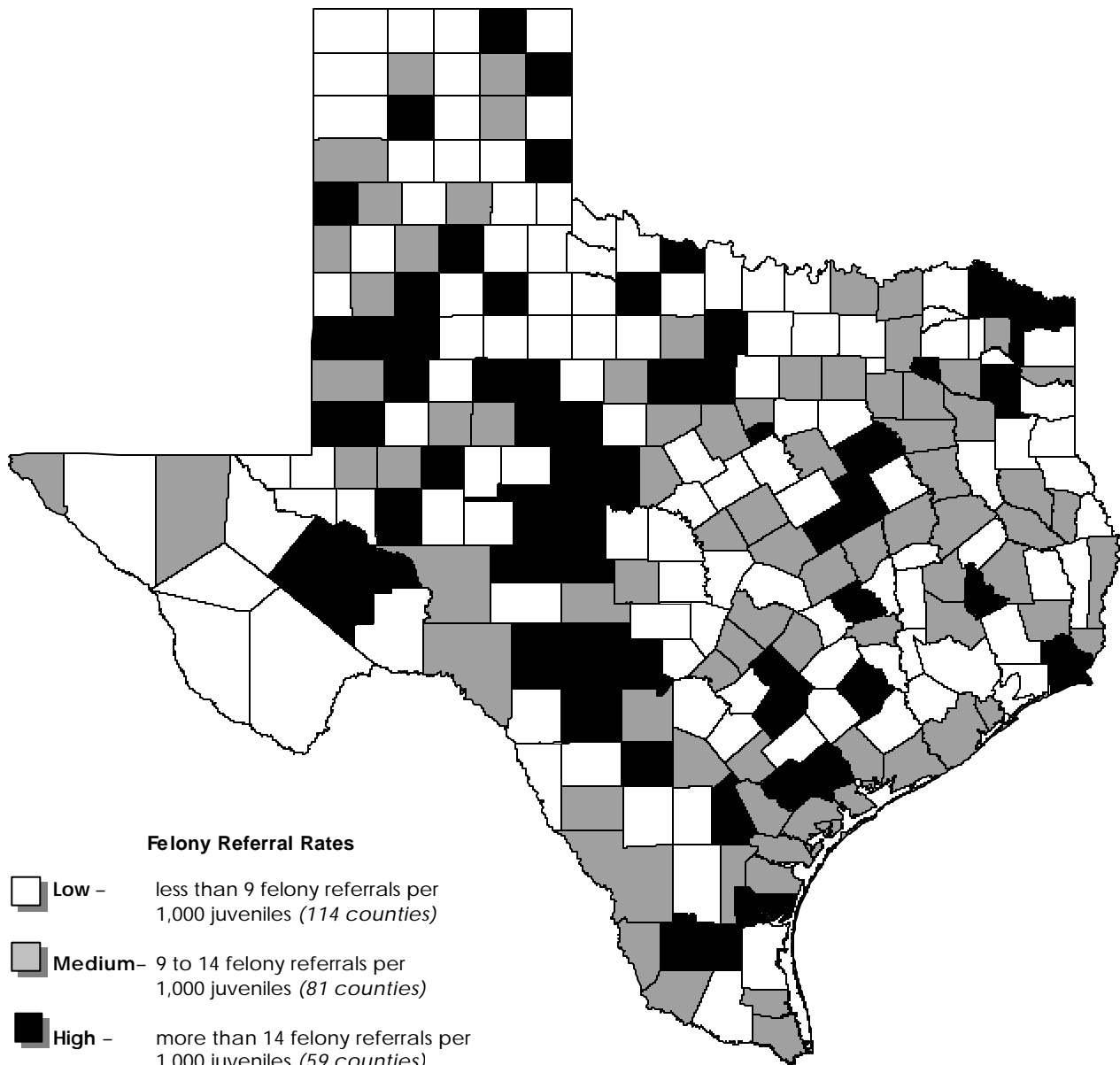


Referral Rates. The average referral rate in 2001 for Texas juvenile probation departments was 48.6 referrals per 1,000 juveniles in the population.

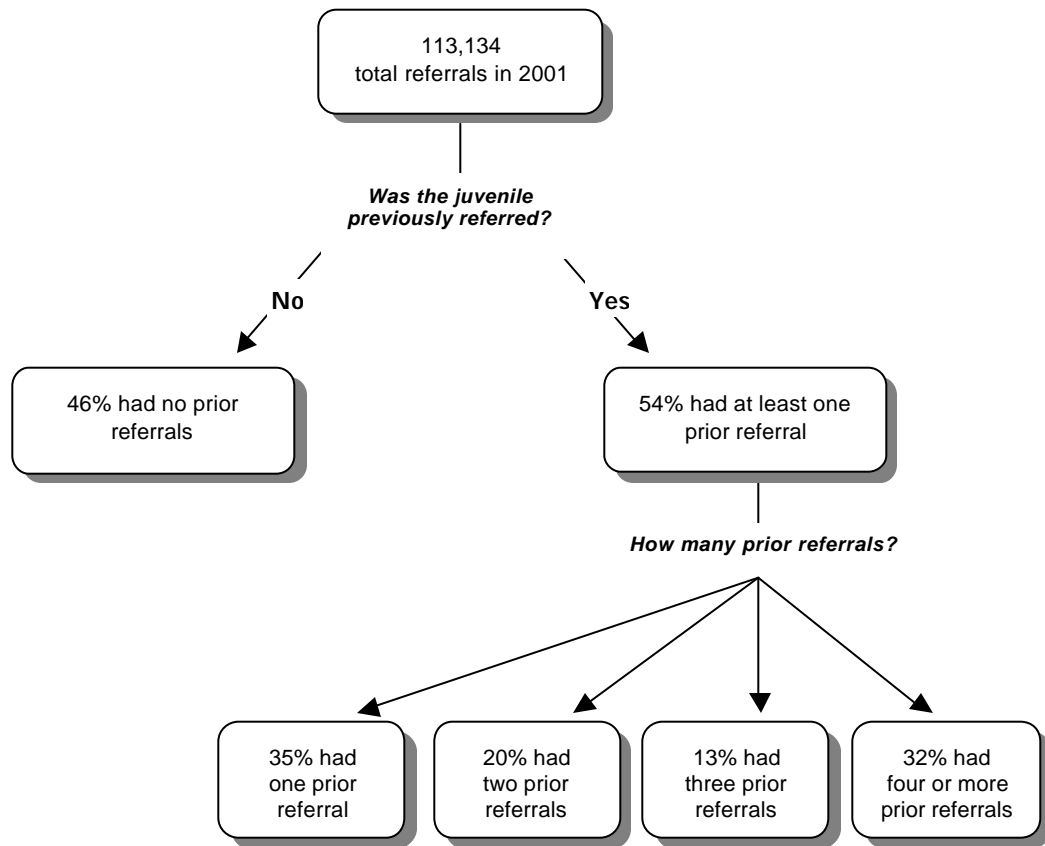
The following map illustrates felony referral rates for 2001 throughout the state. As illustrated on the map, high felony referral rates occur in all regions of the state

– not just in the urban counties. In fact, in the seven largest counties, Dallas, El Paso, Tarrant and Travis counties are in the medium-rate group, while Bexar, Harris and Hidalgo counties are in the low-rate group. Statewide, the average felony referral rate in 2001 was 10.1 referrals per 1,000 juveniles in the population, with a range from zero to 45.0.

Felony Referral Rates per 1,000 Juveniles in 2001



Juvenile Referral History in 2001

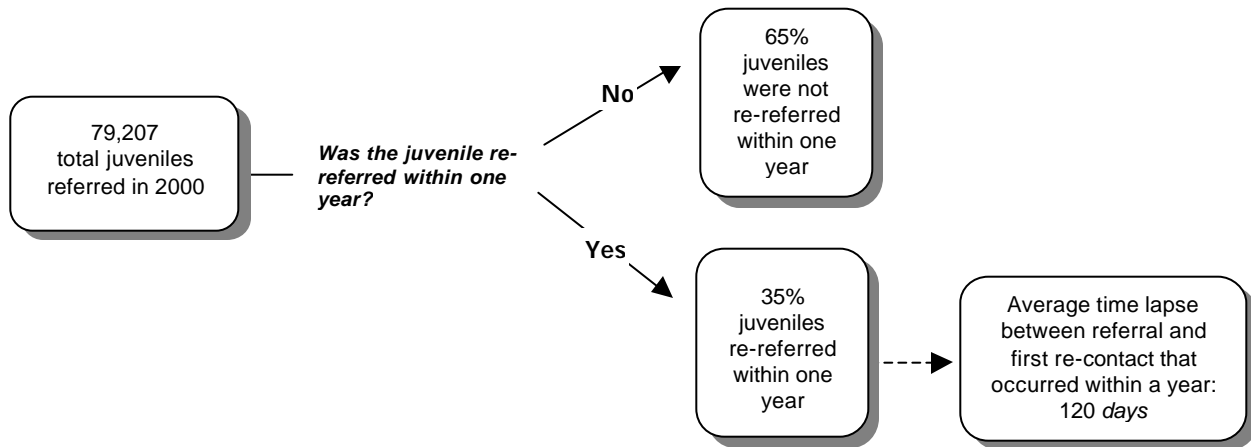


Referral History. More than half of the referrals (54%) had been referred before, with 26% having been previously adjudicated by the courts and 0.4% having been previously committed to the TYC.

Of those with prior referrals, 42% had a felony as the most severe offense in their referral history; 44% had a misdemeanor A or B offense as the most serious offense; and 14% had a CINS offense as the most serious offense.



2000 Re-Contact with Juvenile Probation Departments



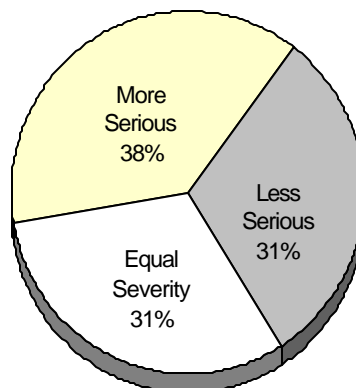
Re-Contact Rates. As illustrated in the chart above, two thirds of the juveniles referred in 2000 did not have a re-contact (i.e., a subsequent referral) within one year. The remaining one third did return within the year with a subsequent referral. This subsequent contact occurred an average of 120 days after the first referral in 2000.

Of those whose first referral in 2000 was for a felony offense, 35% had a re-contact with the probation

department. For misdemeanor A or B offenses, 31% had a re-contact; for violation of probation, 51% had a re-contact; and for CINS offenses, 38% had a re-contact.

When a subsequent referral did occur, slightly more than one-third (38%) of the juveniles were referred with a more serious offense on the initial re-contact; slightly less than one-third (31%) returned with an offense of equal severity; and slightly less than one-third (31%) returned with a less severe offense.

Offense Severity Rate of Initial Re-Contact with Juvenile Probation



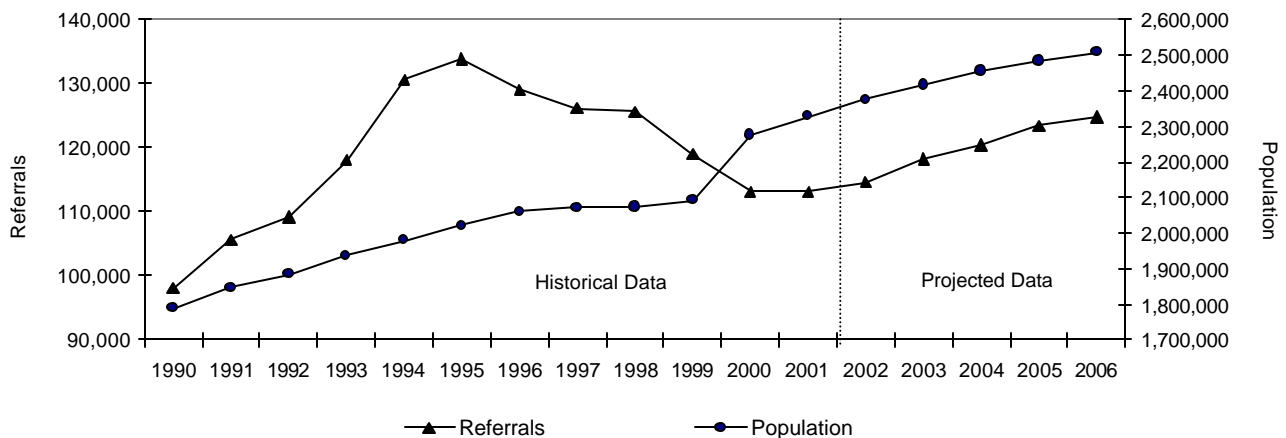
Referral and Population Projections. The Criminal Justice Policy Council is mandated by the Texas Legislature to project juvenile justice correctional populations. In their report titled “Adult and Juvenile Correctional Population Projections, FY 2002 – FY 2007” (June 2002), juvenile probation referrals are projected to increase 10% to 124,824 by calendar year 2006.

This projected increase in referrals is based primarily on the projected increase in the juvenile-aged population. According to the Texas State Data Center, the juvenile

population in Texas is expected to increase significantly. The population projection between 2001 and 2006 is expected to increase nearly 8%, from 2,327,745 to 2,508,791.

The following table illustrates past referral and population data with the Criminal Justice Policy Council’s referral projections and juvenile population projections for the next five years. Historically, referrals peaked in 1995 when there were 133,866 referrals to juvenile probation departments.

Trends and Projections of Referrals vs. Juvenile Population



* Source of population projections: Texas State Data Center (1990 – 1999 based on 1990 U.S. census data; 2000 – 2006 based on 2000 U.S. census data); source of referral projections: Criminal Justice Policy Council report “Adult and Juvenile Correctional Population Projections, FY 2002 – FY 2007” (June 2002)



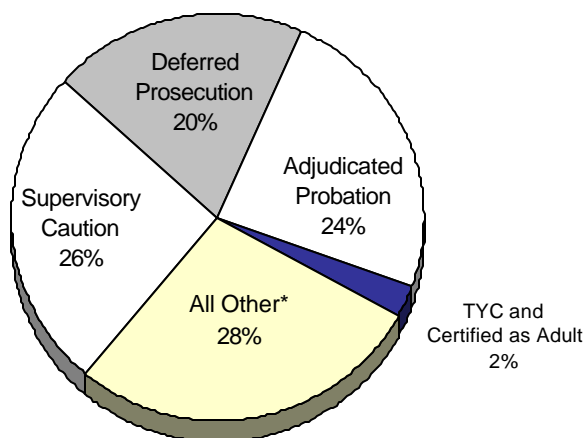
Juvenile Disposition and Supervision Workload Activity in 2001



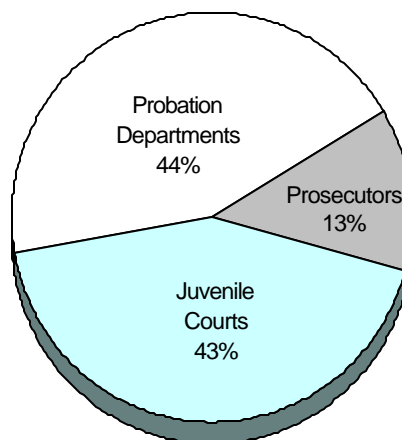


Juvenile Disposition Activity

Types of Dispositions in 2001



Dispositions by Source in 2001



* "All Other" includes dispositions of dismissed, withdrawn, no probable cause, refused/non-suited, not guilty, transferred, and consolidated.

Dispositions were made in 112,784 juvenile cases in calendar year 2001. Juvenile probation departments disposed of 49,870 of these cases, with 7,958 cases dismissed or withdrawn, 26,778 cases given supervisory caution, and 15,134 cases placed on deferred prosecution.

Juvenile prosecutors resolved an additional 14,376 cases. Prosecutors disposed of 1,155 cases with supervisory caution and 4,085 with deferred prosecution. No probable cause was found on 2,918 referrals, while 6,218 were refused and non-suited.

The remaining 48,538 cases were resolved by the juvenile court. Of these, the court ordered supervisory caution to 811 cases; deferred prosecution to 3,440 cases; adjudicated new or modified probation to 26,953 cases; certified and transferred to adult court 141 cases; adjudicated and committed to TYC 2,498 cases (2,336 with indeterminate sentences and 162 with determinate sentences); and consolidated, transferred, dismissed, or found not guilty 14,695 cases.



Dispositions by Offense Severity in 2001

		CINS	Violation of Probation	Misdemeanor A & B	Felony	Total
Supervisory Caution	#	14,026	4,863	8,713	1,142	28,744
	%	57.2%	36.5%	16.2%	5.4%	25.5%
Deferred Prosecution	#	3,066	3	16,827	2,763	22,659
	%	12.5%	0.0%	31.2%	13.1%	20.1%
Adjudicated Probation	#	801	4,114	13,198	8,840	26,953
	%	3.3%	30.9%	24.5%	42.0%	23.9%
TYC	#	0	886	360	1,252	2,498
	%	0.0%	6.6%	0.7%	6.0%	2.2%
Certified as Adult	#	0	0	0	141	141
	%	0.0%	0.0%	0.0%	0.7%	0.1%
All Other*	#	6,611	3,460	14,828	6,890	31,789
	%	27.0%	26.0%	27.5%	32.8%	28.2%
Total	#	24,504	13,326	53,926	21,028	112,784
	%	100.0%	100.0%	100.0%	100.0%	100.0%

* "All Other" includes dispositions of dismissed, withdrawn, no probable cause, refused/non-suited, not guilty, and transferred.

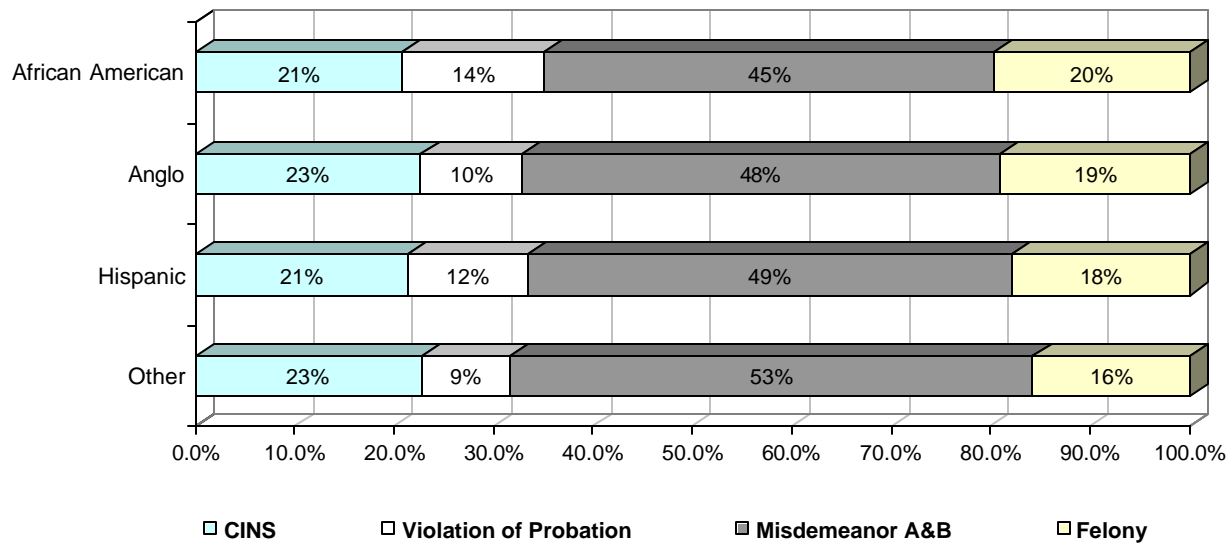
Dispositions by Race in 2001

		African American	Anglo	Hispanic	Other	Total
Supervisory Caution	#	6,513	11,041	10,903	287	28,744
	%	25.5%	28.1%	23.3%	26.2%	25.5%
Deferred Prosecution	#	4,170	8,887	9,340	262	22,659
	%	16.3%	22.6%	20.0%	23.9%	20.1%
Adjudicated Probation	#	6,527	8,764	11,415	247	26,953
	%	25.5%	22.3%	24.4%	22.6%	23.9%
TYC	#	873	663	941	21	2,498
	%	3.4%	1.7%	2.0%	1.9%	2.2%
Certified as Adult	#	59	28	53	1	141
	%	0.2%	0.1%	0.1%	0.1%	0.1%
All Other*	#	7,421	9,971	14,120	277	31,789
	%	29.0%	25.3%	30.2%	25.3%	28.2%
Total	#	25,563	39,354	46,772	1,095	112,784
	%	100.0%	100.0%	100.0%	100.0%	100.0%

* "All Other" includes dispositions of dismissed, withdrawn, no probable cause, refused/non-suited, not guilty, and transferred.



Disposition Offense Severity by Race in 2001



Distribution of Dispositions by Offense Severity and Race. In general, dispositions varied logically with the severity of the offense. As evidenced in the table titled *Dispositions by Offense Severity in 2001* on the previous page, a high proportion of CINS offenses (57%) received a supervisory caution disposition. The more serious offense categories of felony and violation of probation had a much higher proportion of probation and commitments to the TYC than did CINS and misdemeanor A and B offense categories.

The next table, *Dispositions by Race in 2001*, illustrates that a higher proportion of Anglo juveniles received supervisory caution and deferred prosecution

dispositions than did Hispanic and African American juveniles. A higher proportion of African American juveniles were disposed to probation and the TYC than were Hispanic or Anglo juveniles.

Additional information regarding the difference in dispositions among racial groups may be seen in the offense severity distribution. A higher percentage (34%) of African American youth received dispositions for the more serious offense categories of felony and violation of probation. Anglo and Hispanic youth made up a higher percentage of the less serious offense categories of misdemeanor A & B and CINS.

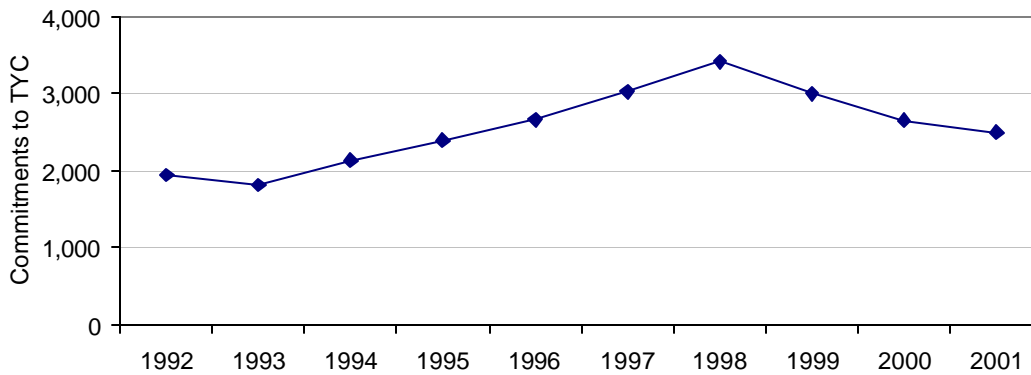


Beyond Juvenile Probation. The number of juveniles certified to stand trial as an adult decreased 29% from 198 in 2000 to 141 in 2001. At the same time, a decrease in both the number of commitments to the TYC and the rate of TYC commitments as a percentage of total referrals occurred.

In 2001, juvenile courts committed 2,498 referrals (2.2% of total referrals) to TYC, compared to 2,650 referrals (2.3% of total referrals) in 2000.

The pattern of continuing decreases in the number of TYC commitments can be attributed in part to the restriction set forth by House Bill 2947, which became effective September 1999. This bill prohibits committing a child to TYC on a misdemeanor offense or violation of misdemeanor probation unless the child has two prior misdemeanor or felony adjudications.

Commitments to the Texas Youth Commission
1992 - 2001



Supervision Workload Activity

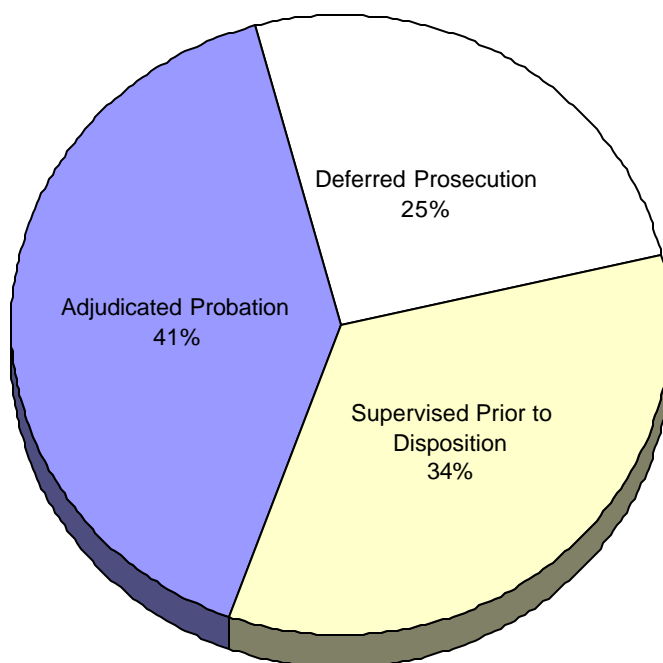
On January 1, 2001, there were 40,430 cases of juveniles receiving active supervision from juvenile probation departments. During the year, 28,597 court-ordered probations, 23,826 deferred prosecutions, and 38,498 conditional releases and other pre-disposition monitoring cases were added for a total of 90,921 new supervisions.

On average, there were 25,095 juveniles on court-ordered, or adjudicated, probation per day during 2001. These juveniles were supervised for an average of 306 days each. During 2001, 3,880 (14%) of the 27,869 supervisions leaving court-ordered probation were unsuccessful in their completion of the program. These probationers were either committed to the

TYC, transferred to an adult criminal trial, absconded and did not return to the program, or terminated early due to persistent non-compliance to program requirements.

The average daily population of supervisions of deferred prosecution during 2001 was 10,620. These juveniles were each supervised for an average of 154 days. Of the 23,144 supervisions leaving deferred prosecution, 4,213 (18%) were unsuccessful in their completion of the program. These juveniles were unsuccessful for the same reasons as the court-ordered probationers, or they were adjudicated to probation during their deferred prosecution supervision period.

Supervision Workload in 2001





Juvenile Detention and Residential Placement Activity in 2001





Juvenile Detention and Residential Placement Activity

Detention Activity. There were 52,014 placements made in the 67 pre-adjudication secure residential or holdover facilities during 2001. Contrary to the decrease in total referrals from 2000, the incidence of secure detention increased 1% in the state. On average, 1,855 youth were securely detained each day of the year in a Texas facility.

These youth were detained for an average of 11.5 days. More than 31% of all juveniles securely detained were released in less than one day; approximately 27% were detained for more than ten days.

Residential Placement Activity. A total of 9,932 out-of-home residential placements were made during 2001. The placements were made in both secure and non-secure residential facilities but did not include secure pre-adjudication or holdover facility placements. These juveniles were placed for an average of 68 days at an average cost of \$82.11 per day.

During fiscal year 2001, \$29,932,821 of state probation funds was budgeted for placement services. Counties without

residential placement funds are forced to seek out alternatives to residential placements, such as finding free placements in the private sector or committing to the TYC juveniles who need to be removed from their homes.

According to the annual Resource Report, approximately 354 juveniles were denied access to residential placement due to insufficient resources, such as funding or available bed space, in 2001.

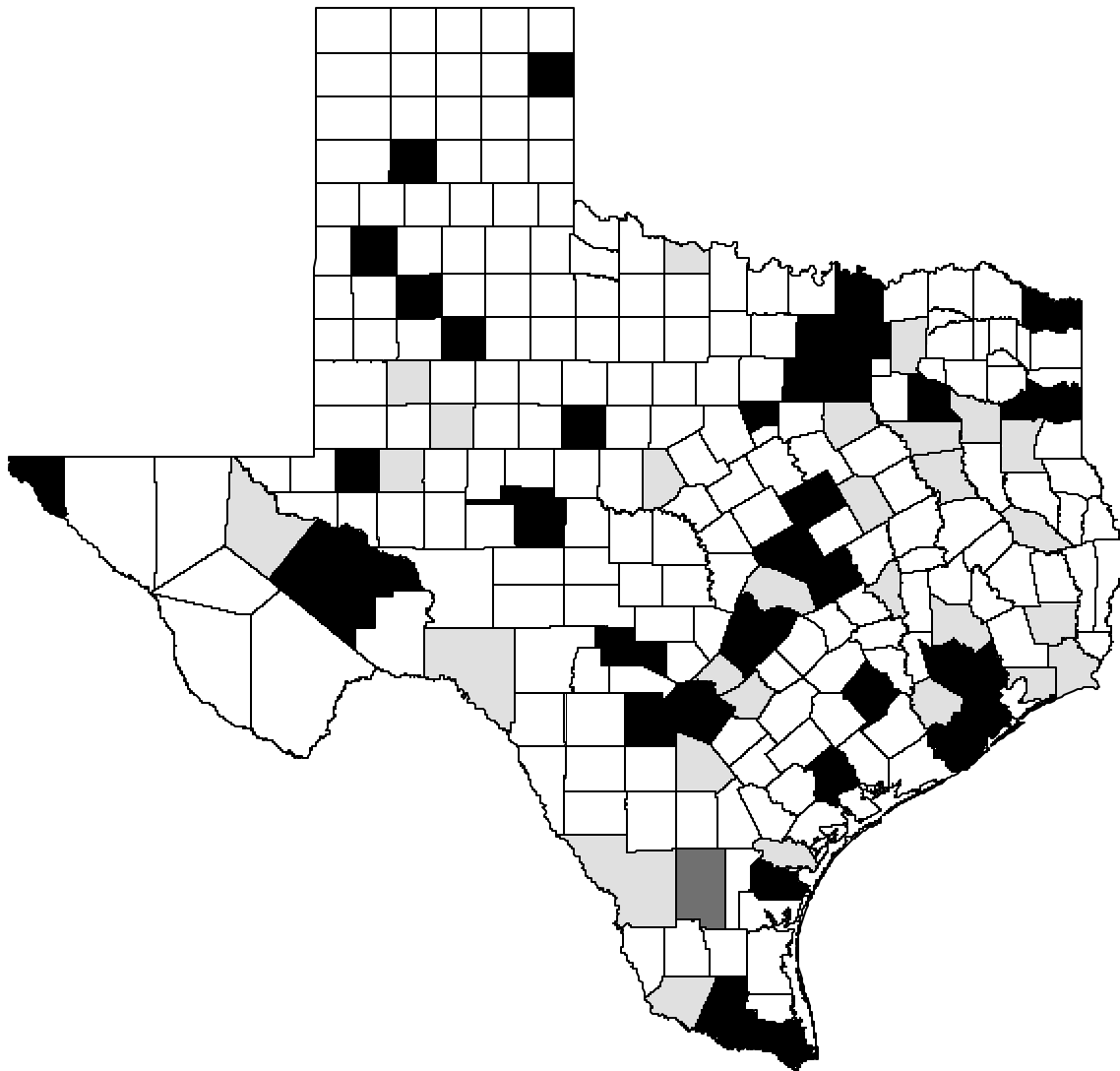
Registry of Secure Facilities. TJPC maintains a statewide registry for all public and private secure juvenile facilities in Texas. The statewide registry functions as a database of information about each secure juvenile facility operating in the state. Under the Texas Family Code, no child shall be placed into a secure facility that is not registered with TJPC. The table on the following page shows the number and types of facilities listed in the 2002 Secure Facilities Registry (data reflects calendar year 2001). The map illustrates the location of the registered facilities.



Summary of 2001 Secure Facilities Registry

	Post-Adjudication	Pre-Adjudication	Hold-Over
Total Number of Registered Facilities in Texas	41	59	8
Number Publicly Operated	28	48	8
Number Privately Operated	13	11	0
Number of Beds Available (Rated Capacity)	2,344	2,230	64

Location of Secure Registered Facilities in 2001



Glossary of Juvenile Justice Terminology





Glossary of Juvenile Justice Terminology

Active Cases - cases detained, placed or supervised during a specified period of time.

Adjudicated Probation - after going to court for an adjudication hearing on the facts, a judge may order this form of community-based supervision for a specified period of time, based on such reasonable and lawful terms as the court may determine. While on adjudicated probation, the offender may be required to participate in any program deemed appropriate, such as an intensive supervision program or residential placement.

Average Daily Population - average number of active juveniles detained, placed or supervised for a specified period of time.

Average Length of Stay - average number of days completed cases spent in detention, on placement or under supervision for a specified period of time.

Certification as Adult - situation wherein the juvenile court waives its jurisdiction so that an accused juvenile felony offender can be prosecuted as an adult. Certification is permissive and not mandatory under Texas law. Depending upon the type of felony committed, a juvenile as young as either 14 or 15 years of age can be certified to stand trial as an adult.

Child/Juvenile - in Texas, a person who is 10 years of age or older and under 17 years of age or a person who is 17 years of age or older and under 18 years of age who is alleged or found to have engaged in delinquent conduct or CINS as a result of acts committed before becoming 17 years of age.

Commitment - a child committed to the care, control and custody of the Texas Youth Commission (TYC). All commitments to the TYC, except under the determinate sentencing act, are for an indeterminate term not to extend beyond the child's 21st birthday.

Conditional Release From Detention - juvenile released from detention or from the department's custody under written orders of conditional release. Most conditional releases are done at the time of the detention hearing or under authorization from the judge. The conditions should be limited to those that are reasonable and necessary to ensure the juvenile will return to court.

Conduct Indicating a Need for Supervision (CINS) - public intoxication, truancy, running away from home, fineable only offenses that have been transferred to a juvenile court from a municipal or justice court, inhalant abuse, expulsion for violating a school disciplinary code, or a violation of a court order under the Services to At Risk Youth Programs.

Deferred Prosecution - a voluntary alternative to adjudication where the child, parent/guardian(s), prosecutor and the juvenile probation department agree upon probation conditions. Deferred prosecution can last up to six months. If the child violates any of the probation conditions, the state may elect to proceed with formal court adjudication.

Delinquent Conduct - violation of any law punishable by incarceration (except traffic laws), violation of juvenile court orders entered under Section 54.04 or 54.05 of the Texas Family Code (except by truancy, running away, or fineable only offenses), contempt of magistrate orders, D.W.I. and other related offenses and third offense driving under the influence of alcohol by a minor.

Department - a juvenile probation department organized and delivering services in one or more counties and supervised by one or more juvenile boards.

Detention - any secure public or private residential facility that is used for the temporary placement of a juvenile accused of having committed an offense, any non-offender, or any other individual accused of having committed a criminal offense.



Glossary of Juvenile Justice Terminology (continued)

Determinate Commitment - sentence imposed on a juvenile offender for up to 40 years. The juvenile will first serve time in TYC but may later be transferred to adult prison and become subject to adult parole laws. A determinate sentence is only available for certain types of felony offenses.

Disposition - after adjudication where the judge decides what probation conditions will be imposed upon the child (and the child's family) or whether to commit the child to the Texas Youth Commission.

Intensive Supervision Program (ISP) - type of probation that is a cost-effective means of diverting juvenile offenders from committal to the Texas Youth Commission. Services provided vary from department to department, but common elements include reduced caseloads by specially trained probation officers and more frequent contacts between the juvenile and his or her probation officer.

Juvenile Board - a body established by law to provide juvenile probation services to a county or counties.

Juvenile Court - a court designated under Section 51.04 of the Texas Family Code, or by other law, to exercise jurisdiction over proceedings under Title 3 of the Texas Family Code.

Program - a non-residential, department-operated or contracted/purchased-service delivery that is conducted over a period of time (i.e., more than one day or a one-time event). A program must have a measurable or reportable objective and outcome. A program serves children who are on some type of supervision. (Does not include detention and out-of-home placement.)

Referral (also called Formal Referral) - any occasion when all three of the following conditions exist: (1) delinquent conduct, conduct indicating a need for supervision, or violation of probation was allegedly committed; (2) the juvenile probation department has jurisdiction and venue; and (3) either (a) face-to-face contact occurs with the office or official designated by the juvenile board or (b) written or verbal authorization to detain is given by the office or official designated by the juvenile board.

Residential Placement - placement of child in a non-secure facility (i.e., foster homes, alcohol and drug treatment facilities, halfway houses, MHMR facilities, etc.) or a secure facility (i.e., boot camps, secure county, state, or private facilities, etc.) either with or without a court proceeding.

Status Offenses - juvenile offenses that are not criminal when committed by adults; e.g. runaway or truancy.

Successful Outcome of Supervision - the completion of the period of supervision without any of the following situations: 1) the juvenile has further court action resulting in commitment to TYC or certification to stand trial as an adult; 2) the juvenile has additional charges being filed as an adult which result in termination of juvenile court supervision; 3) the child absconds and is not returned to supervision; 4) the child's death is a direct result of subsequent criminal conduct; 5) early termination of supervision by the court results from persistent non-compliance to program requirements and refusal to accept services; 6) while under supervision, the child is re-arrested or commits a technical violation and the original supervision is terminated. The outcome of the original supervision is unsuccessful. If, however, the supervision is modified, no outcome should be determined until the modified period of supervision has been completed.

Supervisory Caution - descriptive term for a wide variety of summary, non-judicial dispositions that intake may make of a case. This may include referral of the child to a social agency or a community based first offender program run by law enforcement, contacting parents to inform them of the child's activities, or simply warning the child about his or her activities.



Appendices



Contents

Juvenile Referral Activity

Statewide Summary	44
County-Specific Details	46

Juvenile Disposition Activity

Statewide Summary	53
County-Specific Details	54

Juvenile Supervision Activity

Statewide Summary	61
County-Specific Details	62

Juvenile Detention and Placement Activity

Statewide Summary	69
County-Specific Details	70



Juvenile Probation Referral Activity

STATEWIDE SUMMARY OF 2001 REPORTED ACTIVITY

	Alleged Delinquent Behavior																	Violation of Probation	
	Felony Offenses											Class A & B Misdemeanors					Cntp of Mags Order		Total Delinq
	Hom	Att Hom	Sex Aslt	Robbery	Agg Aslt	Burg	Theft	MV Theft	Drug Offs	Weap Viols	Other Fels	Weap Viols	Aslt	Theft	Drug Offs	Other Misd			
No Prior Refs	31	17	1,204	434	1,676	3,151	669	1,022	1,607	506	1,744	374	5,103	8,330	5,863	7,367	2,119	41,217	23
Prior Refs	29	3	532	685	1,733	2,836	825	1,662	1,412	295	1,338	283	3,992	4,430	3,666	7,322	2,515	33,558	13,641
No Prior Adjud	49	19	1,544	781	2,723	4,871	1,158	1,983	2,380	694	2,571	539	7,773	11,214	8,343	11,797	3,954	62,393	859
Prior Adjud	11	1	192	338	686	1,116	336	701	639	107	511	118	1,322	1,546	1,186	2,892	680	12,382	12,805
No Prior Comm	60	20	1,727	1,108	3,385	5,956	1,485	2,654	2,983	800	3,064	652	9,079	12,730	9,506	14,605	4,624	74,438	13,647
Prior Comm	0	0	9	11	24	31	9	30	36	1	18	5	16	30	23	84	10	337	17
Police Agency	54	20	1,643	1,058	3,126	5,672	1,426	2,568	2,771	656	2,791	613	8,356	12,180	8,230	13,323	1,867	66,354	5,491
School	0	0	17	11	160	67	18	10	152	111	175	23	440	142	1,034	694	96	3,150	206
Other	6	0	76	50	123	248	50	106	96	34	116	21	299	438	265	672	2,671	5,271	7,967
Regular School	51	17	1,602	903	2,975	5,287	1,256	2,299	2,479	686	2,715	551	8,074	11,399	8,388	12,833	3,827	65,342	10,930
Alt Education	2	1	41	70	192	303	68	150	152	51	136	27	440	377	384	569	273	3,236	1,320
Dropped Out	6	2	51	97	146	225	109	155	243	12	128	44	222	484	253	551	101	2,829	786
Susp/Expelled	1	0	42	49	96	172	61	80	145	52	103	35	359	500	504	736	433	3,368	628
10 years old	2	3	47	5	93	137	8	8	1	14	54	3	139	145	17	198	7	881	8
11 years old	0	0	76	12	135	262	16	10	13	35	111	5	327	366	96	451	46	1,961	85
12 years old	1	0	197	35	251	479	50	58	76	70	226	19	765	875	373	1,040	160	4,675	324
13 years old	2	1	328	94	458	864	134	232	224	109	352	54	1,446	1,591	935	1,887	451	9,162	1,051
14 years old	7	1	359	209	723	1,262	318	569	502	164	593	109	1,880	2,477	1,764	2,861	925	14,723	2,328
15 years old	15	7	322	283	823	1,434	428	853	878	197	757	181	2,148	3,283	2,651	3,696	1,405	19,361	3,592
16 years old	28	7	354	448	893	1,464	506	925	1,282	206	919	276	2,313	3,888	3,594	4,347	1,527	22,977	4,455
17 years old	5	1	53	33	33	85	34	29	43	6	70	10	77	135	99	209	113	1,035	1,821
Anglo Male	15	5	728	131	785	2,061	361	626	755	260	1,012	204	2,179	2,500	3,077	4,259	746	19,704	3,111
Anglo Female	2	0	31	29	248	248	77	312	336	18	227	13	1,125	1,724	787	1,047	502	6,726	942
Afr Amer Male	15	3	400	493	649	1,148	367	641	691	113	377	89	1,557	1,889	971	2,736	608	12,747	2,930
Afr Amer Fem	3	2	15	49	347	102	38	116	75	22	115	10	708	1,397	115	654	351	4,119	829
Hispanic Male	22	9	543	367	1,073	2,208	522	786	927	347	1,078	323	2,240	3,132	3,764	4,852	1,413	23,606	4,497
Hsp Female	1	1	10	43	275	184	112	175	210	29	239	15	1,215	1,887	754	1,008	949	7,107	1,266
Other Male	2	0	8	7	24	32	14	26	16	12	24	3	50	152	55	109	40	574	74
Other Female	0	0	1	0	8	4	3	2	9	0	10	0	21	79	6	24	25	192	15
Total Refs	60	20	1,736	1,119	3,409	5,987	1,494	2,684	3,019	801	3,082	657	9,095	12,760	9,529	14,689	4,634	74,775	13,664



Juvenile Probation Referral Activity

STATEWIDE SUMMARY OF 2001 REPORTED ACTIVITY (continued)

	Alleged CINS Behavior											Grand Total Delinquent Violation of Probation & CINS	
	Status Only			Other than Status Only									Total CINS
	Truancy	Runaway	AltEd Expl	Theft	Disd Cond	Inhal	DUID	Liqr Laws	Contp @Risk	Other CINS			
No Prior Refs	1,250	5,823	1,056	263	1,404	5	22	454	6	724	11,007	52,247	
Prior Refs	1,699	6,032	1,467	237	1,556	6	19	417	7	2,248	13,688	60,887	
No Prior Adjud	2,488	10,426	2,106	417	2,554	9	31	735	9	1,885	20,660	83,912	
Prior Adjud	461	1,429	417	83	406	2	10	136	4	1,087	4,035	29,222	
No Prior Comm	2,947	11,769	2,522	499	2,957	11	41	870	13	2,937	24,566	112,651	
Prior Comm	2	86	1	1	3	0	0	1	0	35	129	483	
Police Agency	497	10,713	31	389	1,486	7	41	706	6	2,256	16,132	87,977	
School	1,517	36	2,283	13	579	1	0	57	0	300	4,786	8,142	
Other	935	1,106	209	98	895	3	0	108	7	416	3,777	17,015	
Regular School	2,650	8,996	1,158	470	2,667	9	38	758	13	2,196	18,955	95,227	
Alt Education	143	291	743	16	221	1	1	42	0	97	1,555	6,111	
Dropped Out	63	461	14	10	33	1	2	34	0	145	763	4,378	
Susp/Expelled	93	2,107	608	4	39	0	0	37	0	534	3,422	7,418	
10 years old	10	46	26	14	55	0	0	1	0	14	166	1,055	
11 years old	61	125	75	25	129	0	0	3	0	39	457	2,503	
12 years old	128	541	223	28	255	0	0	9	1	113	1,298	6,297	
13 years old	300	1,466	389	67	506	2	0	62	1	291	3,084	13,297	
14 years old	548	2,608	608	97	576	4	3	143	3	527	5,117	22,168	
15 years old	849	3,505	622	135	731	2	8	297	3	848	7,000	29,953	
16 years old	886	3,234	511	129	667	3	30	343	5	951	6,759	34,191	
17 years old	167	330	69	5	41	0	0	13	0	189	814	3,670	
Anglo Male	581	1,656	654	130	633	1	19	223	3	569	4,469	27,284	
Anglo Female	507	3,018	192	85	265	0	4	91	2	251	4,415	12,083	
Afr Amer Male	278	1,221	516	80	507	0	0	28	1	507	3,138	18,815	
Afr Amer Fem	206	1,447	155	70	271	0	0	10	1	135	2,295	7,243	
Hispanic Male	790	1,434	775	90	879	6	13	391	4	1,051	5,433	33,536	
Hsp Female	567	2,931	193	39	395	4	5	125	2	422	4,683	13,056	
Other Male	6	55	28	4	4	0	0	3	0	25	125	773	
Other Female	14	93	10	2	6	0	0	0	0	12	137	344	
Total Refs	2,949	11,855	2,523	500	2,960	11	41	871	13	2,972	24,695	113,134	



TEXAS JUVENILE PROBATION COMMISSION
Referral Activity by County
01/01/2001 thru 12/31/2001

County	2001 Juv Population	-- Alleged Delinq & VOP Behavior --			-- Alleged CINS Behavior*--		Total Referrals	Referral Rate/1,000	Children Referred	Crisis Intervention
		Violent Felony	Other Felony	Other Delinq/VOP	Status	Other				
ANDERSON	4,629	14	44	150	39	30	277	59.8	187	0
ANDREWS	1,787	10	20	70	13	6	119	66.6	90	2
ANGELINA	8,762	34	73	207	13	0	327	37.3	241	4
ARANSAS	2,317	4	17	128	47	86	282	121.7	211	0
ARCHER	1,107	0	2	7	0	0	9	8.1	9	0
ARMSTRONG	255	---	---	---	---	---	---	---	---	---
ATASCOSA	5,155	10	40	92	2	21	165	32.0	145	16
AUSTIN	2,706	5	13	33	5	0	56	20.7	43	0
BAILEY	800	3	6	14	1	2	26	32.5	24	0
BANDERA	2,083	7	28	34	4	3	76	36.5	68	39
BASTROP	6,733	30	43	142	34	63	312	46.3	232	2
BAYLOR	446	0	12	3	0	0	15	33.6	13	0
BEE	3,065	7	24	107	54	41	233	76.0	180	0
BELL	25,312	90	197	812	320	237	1,656	65.4	1,111	2
BEXAR	154,835	282	864	5,567	249	1,529	8,491	54.8	5,648	0
BLANCO	908	0	4	8	0	0	12	13.2	12	0
BORDEN	88	---	---	---	---	---	---	---	---	---
BOSQUE	1,867	1	12	31	1	0	45	24.1	35	1
BOWIE	8,834	23	101	283	69	285	761	86.1	528	3
BRAZORIA	27,723	70	254	1,198	255	618	2,395	86.4	1,385	180
BRAZOS	12,497	25	75	947	187	155	1,389	111.1	828	0
BREWSTER	825	0	4	17	3	5	29	35.2	20	0
BRISCOE	215	0	2	13	0	0	15	69.8	11	2
BROOKS	1,014	6	27	30	5	5	73	72.0	57	0
BROWN	4,035	15	32	144	54	19	264	65.4	178	561
BURLESON	1,940	7	30	73	22	11	143	73.7	118	0
BURNET	3,591	3	24	107	36	3	173	48.2	138	2
CALDWELL	3,808	21	41	178	20	46	306	80.4	183	9
CALHOUN	2,310	4	22	77	22	27	152	65.8	116	10
CALLAHAN	1,537	0	7	27	2	1	37	24.1	36	0
CAMERON	44,460	145	427	953	289	132	1,946	43.8	1,469	25
CAMP	1,256	1	8	18	0	0	27	21.5	22	0
CARSON	826	---	---	---	---	---	---	---	---	---
CASS	3,233	6	17	24	73	0	120	37.1	105	12
CASTRO	1,107	1	13	16	3	16	49	44.3	37	1
CHAMBERS	3,246	3	19	12	1	2	37	11.4	35	0
CHEROKEE	4,981	7	35	101	11	17	171	34.3	143	6
CHILDRESS	663	0	2	1	0	0	3	4.5	2	0
CLAY	1,211	2	4	10	1	1	18	14.9	16	0
COCHRAN	539	1	1	15	0	7	24	44.5	23	1



TEXAS JUVENILE PROBATION COMMISSION
 Referral Activity by County
 01/01/2001 thru 12/31/2001

County	2001 Juv Population	-- Alleged Delinq & VOP Behavior --			-- Alleged CINS Behavior*--		Total Referrals	Referral Rate/1,000	Children Referred	Crisis Intervention
		Violent Felony	Other Felony	Other Delinq/VOP	Status	Other				
COKE	369	0	0	6	0	1	7	19.0	6	0
COLEMAN	921	1	17	24	2	2	46	49.9	30	0
COLLIN	54,972	101	249	845	192	73	1,460	26.6	1,127	0
COLLINGSWORTH	372	1	9	1	0	0	11	29.6	10	0
COLORADO	2,228	12	34	67	4	2	119	53.4	79	0
COMAL	9,029	18	71	241	67	75	472	52.3	337	0
COMANCHE	1,547	3	16	19	1	0	39	25.2	33	0
CONCHO	263	2	2	2	0	1	7	26.6	5	0
COOKE	4,129	2	29	63	6	2	102	24.7	72	1
CORYELL	7,510	12	58	109	64	20	263	35.0	203	5
COTTLE	202	---	---	---	---	---	---	---	---	---
CRANE	537	1	2	4	0	0	7	13.0	5	0
CROCKETT	517	1	6	2	3	0	12	23.2	12	2
CROSBY	865	2	1	7	1	3	14	16.2	14	1
CULBERSON	393	3	1	3	0	0	7	17.8	5	3
DALLAM	761	0	5	20	7	47	79	103.8	56	0
DALLAS	233,458	666	1,629	5,679	1,126	704	9,804	42.0	7,831	120
DAWSON	1,566	2	30	134	17	36	219	139.8	107	1
DEAF SMITH	2,488	1	33	109	41	72	256	102.9	198	1
DELTA	567	2	2	13	9	3	29	51.1	24	0
DENTON	46,823	72	221	1,150	257	118	1,818	38.8	1,257	0
DEWITT	2,057	16	37	130	12	9	204	99.2	113	2
DICKENS	221	2	2	5	0	1	10	45.2	9	1
DIMMIT	1,406	4	11	50	22	2	89	63.3	58	0
DONLEY	368	---	---	---	---	---	---	---	---	---
DUVAL	1,569	5	9	50	21	41	126	80.3	74	0
EASTLAND	1,754	1	23	21	2	0	47	26.8	43	0
ECTOR	14,635	30	120	655	12	15	832	56.9	611	1
EDWARDS	276	1	5	7	0	1	14	50.7	12	0
ELLIS	14,540	35	76	252	11	1	375	25.8	279	17
EL PASO	85,524	332	498	1,959	1	1	2,791	32.6	2,208	5
ERATH	3,377	5	27	50	18	9	109	32.3	82	0
FALLS	2,236	9	26	71	0	25	131	58.6	91	7
FANNIN	3,069	10	21	87	18	17	153	49.9	113	1
FAYETTE	2,156	1	6	30	1	0	38	17.6	33	0
FISHER	421	2	4	5	12	1	24	57.0	17	3
FLOYD	981	5	13	44	2	9	73	74.4	53	2
FOARD	166	---	---	---	---	---	---	---	---	---
FORT BEND	50,188	68	190	1,012	216	71	1,557	31.0	1,192	141
FRANKLIN	997	3	5	15	15	4	42	42.1	38	0



TEXAS JUVENILE PROBATION COMMISSION
 Referral Activity by County
 01/01/2001 thru 12/31/2001

County	2001 Juv Population	-- Alleged Delinq & VOP Behavior --			-- Alleged CINS Behavior*--		Total Referrals	Referral Rate/1,000	Children Referred	Crisis Intervention
		Violent Felony	Other Felony	Other Delinq/VOP	Status	Other				
FREESTONE	1,838	5	7	16	1	2	31	16.9	29	0
FRIO	1,835	5	22	70	22	16	135	73.6	84	0
GAINES	2,210	7	13	25	6	7	58	26.2	49	0
GALVESTON	26,945	103	243	904	51	248	1,549	57.5	971	0
GARZA	576	1	0	15	5	8	29	50.3	22	1
GILLESPIE	1,976	2	2	25	3	2	34	17.2	29	0
GLASSCOCK	194	0	4	0	0	0	4	20.6	4	0
GOLIAD	791	1	17	22	5	1	46	58.2	40	0
GONZALES	2,178	17	32	57	22	11	139	63.8	107	0
GRAY	2,213	7	17	83	43	29	179	80.9	152	0
GRAYSON	11,499	28	90	254	8	9	389	33.8	291	3
GREGG	11,851	86	97	502	138	81	904	76.3	614	0
GRIMES	2,483	6	15	41	0	0	62	25.0	57	1
GUADALUPE	10,719	31	64	340	74	272	781	72.9	559	9
HALE	4,322	8	41	138	4	5	196	45.3	168	0
HALL	396	---	---	---	---	---	---	---	---	---
HAMILTON	850	0	3	11	7	0	21	24.7	17	0
HANSFORD	624	1	0	3	0	0	4	6.4	4	0
HARDEMAN	504	---	---	---	---	---	---	---	---	---
HARDIN	5,610	22	46	172	17	70	327	58.3	192	29
HARRIS	376,455	717	2,428	8,394	3,764	707	16,010	42.5	11,106	0
HARRISON	7,109	14	47	233	70	12	376	52.9	266	88
HARTLEY	493	0	1	3	4	9	17	34.5	17	0
HASKELL	649	0	3	7	2	0	12	18.5	9	0
HAYS	10,061	27	101	396	89	66	679	67.5	462	8
HEMPHILL	405	0	8	13	3	5	29	71.6	19	0
HENDERSON	7,470	21	64	201	33	20	339	45.4	244	0
HIDALGO	78,229	174	462	1,034	206	67	1,943	24.8	1,528	0
HILL	3,446	11	28	83	4	5	131	38.0	91	33
HOCKLEY	2,732	4	30	40	9	40	123	45.0	102	2
HOOD	4,244	15	34	137	77	29	292	68.8	236	2
HOPKINS	3,422	4	19	72	82	7	184	53.8	141	0
HOUSTON	2,288	5	16	48	2	18	89	38.9	54	0
HOWARD	3,366	9	32	117	80	31	269	79.9	204	0
HUDSPETH	471	0	4	0	0	0	4	8.5	4	8
HUNT	8,501	23	61	294	46	2	426	50.1	285	0
HUTCHINSON	2,665	5	18	69	29	60	181	67.9	141	6
IRION	228	0	2	3	0	3	8	35.1	8	0
JACK	884	1	15	28	0	0	44	49.8	38	0
JACKSON	1,617	5	14	32	5	1	57	35.3	49	1



TEXAS JUVENILE PROBATION COMMISSION
Referral Activity by County
01/01/2001 thru 12/31/2001

County	2001 Juv Population	-- Alleged Delinq & VOP Behavior --			-- Alleged CINS Behavior*--		Total Referrals	Referral Rate/1,000	Children Referred	Crisis Intervention
		Violent Felony	Other Felony	Other Delinq/VOP	Status	Other				
JASPER	3,898	9	24	43	4	2	82	21.0	71	216
JEFF DAVIS	256	0	0	1	0	0	1	3.9	1	0
JEFFERSON	25,972	140	319	1,104	318	197	2,078	80.0	926	0
JIM HOGG	679	2	14	38	5	57	116	170.8	70	0
JIM WELLS	5,039	18	48	157	103	63	389	77.2	277	91
JOHNSON	15,501	38	67	282	26	25	438	28.3	341	41
JONES	1,869	1	9	23	10	8	51	27.3	41	4
KARNES	1,470	8	6	40	13	28	95	64.6	71	1
KAUFMAN	9,032	26	80	177	27	4	314	34.8	255	7
KENDALL	2,967	1	12	46	15	2	76	25.6	69	1
KENEDY	44	---	---	---	---	---	---	---	---	---
KENT	89	0	0	1	0	0	1	11.2	1	0
KERR	4,324	16	63	273	61	7	420	97.1	288	0
KIMBLE	441	3	1	6	1	0	11	24.9	10	1
KING	57	---	---	---	---	---	---	---	---	---
KINNEY	338	0	1	7	0	0	8	23.7	8	0
KLEBERG	3,389	22	34	64	24	4	148	43.7	127	14
KNOX	523	0	3	1	0	0	4	7.6	4	0
LAMAR	5,104	7	24	71	12	10	124	24.3	114	16
LAMB	1,766	5	3	32	17	6	63	35.7	47	4
LAMPASAS	2,132	6	15	99	20	17	157	73.6	104	5
LASALLE	726	7	17	41	5	13	83	114.3	65	0
LAVACA	1,986	2	15	22	1	1	41	20.6	30	0
LEE	1,933	3	8	31	1	0	43	22.2	36	0
LEON	1,607	6	12	18	5	2	43	26.8	37	2
LIBERTY	8,083	13	57	125	44	19	258	31.9	222	0
LIMESTONE	2,320	7	32	66	6	3	114	49.1	77	1
LIPSCOMB	351	0	0	5	2	2	9	25.6	9	0
LIVE OAK	1,202	5	18	26	0	2	51	42.4	36	0
LLANO	1,216	4	5	20	12	3	44	36.2	35	11
LOVING	8	---	---	---	---	---	---	---	---	---
LUBBOCK	24,244	126	354	1,203	256	95	2,034	83.9	1,219	0
LYNN	918	3	13	9	3	2	30	32.7	27	7
MCCULLOCH	945	1	9	24	1	1	36	38.1	34	1
MCLENNAN	22,584	87	232	1,092	254	145	1,810	80.1	1,126	7
MCMULLEN	105	0	0	4	0	0	4	38.1	4	0
MADISON	1,181	2	2	8	0	0	12	10.2	11	2
MARION	1,021	6	5	15	4	0	30	29.4	23	0
MARTIN	666	0	5	26	3	1	35	52.6	24	0
MASON	367	1	4	1	3	14	23	62.7	21	0



TEXAS JUVENILE PROBATION COMMISSION
Referral Activity by County
01/01/2001 thru 12/31/2001

County	2001 Juv Population	-- Alleged Delinq & VOP Behavior --			-- Alleged CINS Behavior*--		Total Referrals	Referral Rate/1,000	Children Referred	Crisis Intervention
		Violent Felony	Other Felony	Other Delinq/VOP	Status	Other				
MATAGORDA	4,756	15	49	166	55	59	344	72.3	214	181
MAVERICK	6,944	6	49	146	16	28	245	35.3	182	27
MEDINA	4,869	20	41	83	16	15	175	35.9	130	12
MENARD	261	0	6	3	0	0	9	34.5	9	1
MIDLAND	14,468	48	121	635	3	4	811	56.1	482	0
MILAM	2,732	5	24	54	1	0	84	30.7	73	53
MILLS	639	0	1	3	0	0	4	6.3	4	0
MITCHELL	768	5	2	19	53	0	79	102.9	51	2
MONTAGUE	1,958	0	15	19	0	1	35	17.9	34	0
MONTGOMERY	36,527	88	282	800	168	133	1,471	40.3	1,115	1
MOORE	2,630	2	24	59	37	20	142	54.0	108	2
MORRIS	1,414	2	47	35	0	1	85	60.1	54	0
MOTLEY	139	0	0	3	0	0	3	21.6	3	0
NACOGDOCHES	5,790	18	40	116	33	26	233	40.2	186	121
NAVARRO	4,977	20	50	129	22	5	226	45.4	174	0
NEWTON	1,655	4	14	12	3	0	33	19.9	29	3
NOLAN	1,803	16	65	103	517	7	708	392.7	399	14
NUECES	35,122	116	270	1,795	764	118	3,063	87.2	1,859	0
OCHILTREE	1,120	2	14	18	0	5	39	34.8	34	0
OLDHAM	372	0	3	1	0	0	4	10.8	4	0
ORANGE	9,541	41	84	190	37	1	353	37.0	259	0
PALO PINTO	2,947	11	34	42	30	19	136	46.1	100	0
PANOLA	2,408	6	1	41	7	2	57	23.7	47	13
PARKER	11,040	15	55	151	207	4	432	39.1	376	0
PARMER	1,343	0	22	23	0	0	45	33.5	37	0
PECOS	1,874	6	22	60	18	3	109	58.2	78	0
POLK	3,983	17	35	141	2	5	200	50.2	157	123
POTTER	11,958	62	158	668	185	2	1,075	89.9	683	0
PRESIDIO	1,030	2	4	3	0	0	9	8.7	8	0
RAINS	964	2	12	24	6	4	48	49.8	34	0
RANDALL	11,078	36	41	318	76	4	475	42.9	330	0
REAGAN	477	0	2	12	1	0	15	31.4	14	0
REAL	320	1	9	5	0	0	15	46.9	15	1
RED RIVER	1,426	6	15	37	2	5	65	45.6	49	12
REEVES	1,591	3	4	69	18	12	106	66.6	73	9
REFUGIO	905	1	8	50	3	11	73	80.7	39	0
ROBERTS	110	1	0	6	0	0	7	63.6	7	0
ROBERTSON	1,861	4	21	41	0	1	67	36.0	43	1
ROCKWALL	5,719	5	36	68	8	3	120	21.0	110	11
RUNNELS	1,336	14	10	38	5	4	71	53.1	52	0



TEXAS JUVENILE PROBATION COMMISSION
 Referral Activity by County
 01/01/2001 thru 12/31/2001

County	2001 Juv Population	-- Alleged Delinq & VOP Behavior --			-- Alleged CINS Behavior*--		Total Referrals	Referral Rate/1,000	Children Referred	Crisis Intervention
		Violent Felony	Other Felony	Other Delinq/VOP	Status	Other				
RUSK	4,984	8	21	40	24	33	126	25.3	97	1
SABINE	927	1	1	6	0	0	8	8.6	8	1
SAN AUGUSTINE	903	4	5	2	0	0	11	12.2	9	1
SAN JACINTO	2,440	15	26	26	1	0	68	27.9	60	72
SAN PATRICIO	8,553	17	60	218	121	130	546	63.8	428	0
SAN SABA	719	1	2	9	1	2	15	20.9	12	3
SCHLEICHER	376	0	7	5	0	3	15	39.9	13	0
SCURRY	1,642	4	24	41	3	8	80	48.7	61	32
SHACKELFORD	415	0	4	4	0	0	8	19.3	8	0
SHELBY	2,739	2	12	11	3	5	33	12.0	31	0
SHERMAN	439	0	1	7	3	3	14	31.9	11	0
SMITH	18,693	48	121	610	89	20	888	47.5	597	0
SOMERVELL	884	0	14	15	3	3	35	39.6	23	0
STARR	7,754	10	77	165	15	37	304	39.2	247	3
STEPHENS	1,025	2	15	18	2	0	37	36.1	28	15
STERLING	196	1	0	1	0	0	2	10.2	2	0
STONEWALL	148	0	0	6	0	0	6	40.5	4	0
SUTTON	469	0	3	7	10	0	20	42.6	19	1
SWISHER	993	2	5	12	6	8	33	33.2	30	1
TARRANT	158,266	662	1,298	4,758	587	404	7,709	48.7	4,973	0
TAYLOR	13,214	39	174	563	13	54	843	63.8	573	0
TERRELL	133	---	---	---	---	---	---	---	---	---
TERRY	1,510	4	27	39	9	28	107	70.9	72	5
THROCKMORTON	203	0	0	1	0	0	1	4.9	1	0
TITUS	3,346	9	28	74	7	0	118	35.3	100	0
TOM GREEN	10,950	27	160	595	128	41	951	86.8	595	48
TRAVIS	71,079	212	477	3,112	370	436	4,607	64.8	2,816	0
TRINITY	1,316	0	11	13	0	0	24	18.2	23	13
TYLER	2,021	3	15	38	1	10	67	33.2	60	36
UPSHUR	4,070	15	46	97	49	50	257	63.1	194	6
UPTON	461	3	8	11	0	1	23	49.9	22	0
UVALDE	3,244	11	45	96	56	6	214	66.0	146	9
VAL VERDE	5,683	15	39	159	3	5	221	38.9	174	0
VAN ZANDT	5,397	24	44	122	58	55	303	56.1	228	0
VICTORIA	9,911	54	102	909	209	44	1,318	133.0	543	0
WALKER	4,304	9	38	63	0	6	116	27.0	92	0
WALLER	3,510	5	17	38	7	11	78	22.2	62	4
WARD	1,381	2	3	60	29	4	98	71.0	75	0
WASHINGTON	3,220	4	40	86	26	19	175	54.3	159	0
WEBB	26,308	85	262	1,112	257	290	2,006	76.3	1,349	61



TEXAS JUVENILE PROBATION COMMISSION
Referral Activity by County
01/01/2001 thru 12/31/2001

County	2001 Juv Population	-- Alleged Delinq & VOP Behavior --			-- Alleged CINS Behavior*--		Total Referrals	Referral Rate/1,000	Children Referred	Crisis Intervention
		Violent Felony	Other Felony	Other Delinq/VOP	Status	Other				
WHARTON	4,866	10	33	99	0	0	142	29.2	118	0
WHEELER	568	1	0	4	4	2	11	19.4	10	0
WICHITA	13,105	93	142	753	12	43	1,043	79.6	633	0
WILBARGER	1,624	4	6	30	1	0	41	25.2	39	8
WILLACY	2,524	12	11	42	2	0	67	26.5	55	14
WILLIAMSON	30,552	78	171	707	133	92	1,181	38.7	850	0
WILSON	4,230	2	24	57	21	108	212	50.1	179	20
WINKLER	886	1	5	12	4	0	22	24.8	20	0
WISE	6,347	9	39	77	0	0	125	19.7	99	7
WOOD	3,402	10	22	86	36	15	169	49.7	131	0
YOAKUM	1,010	1	15	33	8	0	57	56.4	48	1
YOUNG	1,914	7	19	25	10	4	65	34.0	56	21
ZAPATA	1,580	8	11	55	25	95	194	122.8	123	6
ZAVALA	1,590	2	4	40	3	4	53	33.3	42	5
TOTALS	2,327,745	6,344	17,067	65,028	14,804	9,891	113,134	48.6	78,393	2,796

* Referrals for Alternative Education Expulsion are included in the "Other CINS" category in the Activity by County tables only. Elsewhere in this document, they are counted as "Status" offenses.



Juvenile Probation Disposition Activity STATEWIDE SUMMARY OF 2001 REPORTED ACTIVITY

	Alleged Delinquent Behavior																	Violation of Probation	
	Felony Offenses											Class A & B Misdemeanors					Contp of Mags Order		Total Delinq
	Hom	Att Hom	Sex Aslt	Robbery	Agg Aslt	Burg	Theft	MV Theft	Drug Offs	Weap Viols	Other Fels	Weap Viols	Aslt	Theft	Drug Offs	Other Misd			
Dism/Withdrawn	0	0	28	37	118	163	91	128	67	11	127	18	462	688	398	953	257	3,546	964
Supv Caution	2	0	24	22	105	141	46	107	95	32	128	48	1,097	2,680	1,119	2,450	671	8,767	4,222
Deferred Pros	1	0	11	9	128	350	43	100	118	41	232	78	1,257	3,299	2,165	2,696	1,808	12,336	1
No Prob Cause	2	2	104	31	166	221	32	147	89	28	115	25	459	189	219	526	63	2,418	166
Ref & Non-Suit	4	1	206	102	358	363	181	255	238	48	248	61	871	661	387	1,059	262	5,305	552
Supv Caution	1	0	49	15	89	67	53	32	47	17	62	11	194	72	57	196	28	990	83
Deferred Pros	0	2	55	25	149	317	85	115	144	59	251	39	771	537	533	738	120	3,940	2
Dism/NG/Trans	1	1	159	69	379	364	117	207	196	39	165	43	703	427	435	880	162	4,347	356
Supv Caution	0	0	0	0	4	2	0	1	0	0	1	1	11	10	7	50	10	97	558
Deferred Pros	0	0	17	12	64	130	18	29	152	23	82	21	340	917	980	496	35	3,316	0
Adj Probation	13	1	483	280	1,012	2,640	494	1,031	1,224	308	956	309	2,582	2,548	2,572	3,781	683	20,917	1,077
Modf/Extd Prob	0	0	5	16	42	105	33	79	38	12	45	14	148	177	147	221	47	1,129	3,037
Indeter Commit	6	1	95	128	148	218	71	169	150	16	88	7	70	93	48	139	3	1,450	886
Deter Commit	9	2	37	72	27	1	1	0	9	2	2	****	****	****	****	****	****	162	****
Cert Adult Court	18	4	19	56	11	10	1	5	6	3	8	****	****	****	****	****	****	141	****
Consolidated	1	2	64	60	148	406	130	247	184	54	184	61	645	998	735	1,451	732	6,102	1,422

	Alleged CINS Behavior											Grand Total Delinquent Violation of Probation & CINS
	Status Only			Other than Status Only							Total CINS	
	Truancy	Runaway	AltEd Expl	Theft	Disd Cond	Inhal	DUID	Liqr Laws	Contp @Risk	Other CINS		
Dism/Withdrawn	132	2,276	99	32	121	1	0	79	2	706	3,448	7,958
Supv Caution	1,559	7,443	848	361	1,924	1	19	467	7	1,160	13,789	26,778
Deferred Pros	370	766	879	37	349	3	6	118	1	268	2,797	15,134
No Prob Cause	46	120	34	4	83	0	3	15	1	28	334	2,918
Ref & Non-Suit	52	129	69	10	44	1	3	15	0	38	361	6,218
Supv Caution	9	27	10	3	18	0	2	8	0	5	82	1,155
Deferred Pros	43	36	7	1	38	2	0	6	0	10	143	4,085
Dism/NG/Trans	70	182	27	2	49	2	1	20	0	26	379	5,082
Supv Caution	53	41	9	6	38	0	0	2	0	7	156	811
Deferred Pros	46	19	15	1	9	0	1	29	0	4	124	3,440
Adj Probation	200	208	114	11	62	0	7	37	1	82	722	22,716
Modf/Extd Prob	8	19	9	1	5	1	1	11	0	16	71	4,237
Indeter Commit	****	****	****	****	****	****	****	****	****	****	****	2,336
Deter Commit	****	****	****	****	****	****	****	****	****	****	****	162
Cert Adult Court	****	****	****	****	****	****	****	****	****	****	****	141
Consolidated	234	558	391	24	112	1	0	67	1	701	2,089	9,613

**** The Texas Family Code does not authorize these types of dispositions for the particular offense category.



TEXAS JUVENILE PROBATION COMMISSION
Disposition Activity by County
01/01/2001 thru 12/31/2001

County	Refused/Dismissed/ Diverted/Not Guilty	Supervisory Caution	Deferred Prosecution	Adjudicated to Probation	Modified Probation	Adjudicated to TYC	Certified as Adult	Consolidated Cases	Total Dispositions
ANDERSON	171	11	75	50	0	5	0	58	370
ANDREWS	31	25	31	33	9	1	1	0	131
ANGELINA	68	58	70	59	7	14	0	42	318
ARANSAS	44	97	55	26	17	9	0	4	252
ARCHER	1	0	4	2	1	0	0	0	8
ARMSTRONG	---	---	---	---	---	---	---	---	---
ATASCOSA	27	26	62	41	8	4	1	0	169
AUSTIN	8	18	17	7	1	3	0	2	56
BAILEY	7	6	6	6	2	1	0	2	30
BANDERA	1	8	35	21	1	0	0	1	67
BASTROP	40	106	99	85	0	9	2	41	382
BAYLOR	2	0	1	8	1	3	0	1	16
BEE	37	59	29	33	25	8	0	12	203
BELL	410	470	392	201	35	28	0	94	1,630
BEXAR	825	158	2,140	1,680	561	224	15	3,708	9,311
BLANCO	1	1	6	0	0	0	0	0	8
BORDEN	---	---	---	---	---	---	---	---	---
BOSQUE	6	1	16	12	8	1	0	2	46
BOWIE	47	548	80	54	2	5	0	21	757
BRAZORIA	294	1,435	62	398	34	24	1	93	2,341
BRAZOS	221	667	221	182	52	17	1	34	1,395
BREWSTER	4	9	6	2	0	0	0	4	25
BRISCOE	1	8	2	2	0	1	0	1	15
BROOKS	15	5	7	18	7	0	0	9	61
BROWN	51	54	78	62	4	5	1	7	262
BURLESON	13	21	29	39	21	4	0	20	147
BURNET	10	52	73	26	11	1	0	19	192
CALDWELL	76	27	33	98	19	3	0	40	296
CALHOUN	26	29	28	34	7	2	0	6	132
CALLAHAN	9	8	20	0	0	0	0	1	38
CAMERON	410	424	378	445	23	34	2	97	1,813
CAMP	8	9	13	0	0	0	0	0	30
CARSON	---	---	---	---	---	---	---	---	---
CASS	6	77	26	17	1	1	0	0	128
CASTRO	3	19	10	10	4	0	0	2	48
CHAMBERS	3	3	0	22	0	1	1	0	30
CHEROKEE	20	48	89	23	2	1	0	12	195
CHILDRESS	2	0	0	1	0	0	1	0	4
CLAY	1	1	8	8	3	1	0	0	22
COCHRAN	0	0	3	19	1	1	0	0	24



TEXAS JUVENILE PROBATION COMMISSION
Disposition Activity by County
01/01/2001 thru 12/31/2001

County	Refused/Dismissed/ Diverted/Not Guilty	Supervisory Caution	Deferred Prosecution	Adjudicated to Probation	Modified Probation	Adjudicated to TYC	Certified as Adult	Consolidated Cases	Total Dispositions
COKE	2	2	3	1	0	0	0	0	8
COLEMAN	5	11	21	1	0	4	0	5	47
COLLIN	281	197	471	295	66	20	0	145	1,475
COLLINGSWORTH	1	1	4	0	0	0	0	0	6
COLORADO	36	6	26	37	9	3	0	14	131
COMAL	81	50	112	107	39	6	0	65	460
COMANCHE	20	2	14	5	2	1	0	0	44
CONCHO	4	0	2	1	1	1	0	0	9
COOKE	6	11	29	30	8	0	0	3	87
CORYELL	14	77	97	39	12	10	0	18	267
COTTLE	2	0	0	0	0	0	0	0	2
CRANE	1	3	1	1	0	0	0	0	6
CROCKETT	1	1	4	0	0	0	0	0	6
CROSBY	8	0	0	4	0	1	0	0	13
CULBERSON	---	---	---	---	---	---	---	---	---
DALLAM	4	59	7	9	0	1	0	1	81
DALLAS	1,733	1,708	3,351	1,929	771	295	4	451	10,242
DAWSON	8	127	32	38	7	5	0	1	218
DEAF SMITH	10	63	87	72	16	7	1	14	270
DELTA	9	5	9	6	0	0	0	0	29
DENTON	185	149	441	472	116	44	1	370	1,778
DEWITT	25	58	35	43	0	3	0	44	208
DICKENS	4	1	2	2	0	0	0	0	9
DIMITT	2	15	48	6	0	1	0	18	90
DONLEY	---	---	---	---	---	---	---	---	---
DUVAL	144	12	18	14	2	0	0	0	190
EASTLAND	6	6	11	6	0	3	0	5	37
ECTOR	329	239	173	64	94	8	0	32	939
EDWARDS	0	2	12	2	0	0	0	0	16
ELLIS	81	84	91	62	8	12	2	17	357
EL PASO	1,204	0	387	622	104	43	1	76	2,437
ERATH	8	6	37	26	2	0	0	12	91
FALLS	20	39	32	27	3	6	0	5	132
FANNIN	30	44	56	6	3	2	2	5	148
FAYETTE	2	9	9	10	5	2	0	0	37
FISHER	2	13	3	0	0	2	0	0	20
FLOYD	5	24	23	19	0	4	0	2	77
FOARD	---	---	---	---	---	---	---	---	---
FORT BEND	462	242	421	404	53	28	1	35	1,646
FRANKLIN	5	12	15	4	0	2	0	0	38



TEXAS JUVENILE PROBATION COMMISSION
Disposition Activity by County
01/01/2001 thru 12/31/2001

County	Refused/Dismissed/ Diverted/Not Guilty	Supervisory Caution	Deferred Prosecution	Adjudicated to Probation	Modified Probation	Adjudicated to TYC	Certified as Adult	Consolidated Cases	Total Dispositions
FREESTONE	7	3	11	6	4	2	0	1	34
FRIO	38	11	46	7	2	0	0	16	120
GAINES	33	7	15	15	2	0	0	0	72
GALVESTON	289	328	271	325	173	51	0	102	1,539
GARZA	3	7	8	6	4	0	0	1	29
GILLESPIE	0	13	21	0	0	0	0	0	34
GLASSCOCK	---	---	---	---	---	---	---	---	---
GOLIAD	6	0	16	13	0	1	0	0	36
GONZALES	25	12	43	27	3	2	0	16	128
GRAY	0	46	46	54	21	6	0	0	173
GRAYSON	96	109	78	65	10	6	0	41	405
GREGG	112	284	203	121	24	20	0	74	838
GRIMES	5	0	21	4	0	0	0	6	36
GUADALUPE	88	333	214	79	20	4	2	35	775
HALE	27	2	44	105	21	1	0	2	202
HALL	---	---	---	---	---	---	---	---	---
HAMILTON	6	3	6	1	2	0	0	0	18
HANSFORD	0	0	1	2	0	1	0	0	4
HARDEMAN	---	---	---	---	---	---	---	---	---
HARDIN	43	144	52	51	0	15	1	23	329
HARRIS	4,388	2,443	1,877	5,470	4	438	47	749	15,416
HARRISON	112	58	97	78	11	9	1	22	388
HARTLEY	0	9	3	5	0	0	0	1	18
HASKELL	5	1	0	5	2	1	0	0	14
HAYS	78	261	198	136	13	6	0	34	726
HEMPHILL	8	5	7	3	0	2	0	2	27
HENDERSON	97	68	58	32	22	6	0	48	331
HIDALGO	794	171	485	352	106	23	0	136	2,067
HILL	14	11	36	56	10	7	0	1	135
HOCKLEY	8	56	8	40	0	9	0	0	121
HOOD	56	60	104	49	11	18	0	8	306
HOPKINS	22	53	55	53	4	7	0	5	199
HOUSTON	16	14	9	12	12	3	0	11	77
HOWARD	34	161	33	21	2	5	0	7	263
HUDSPETH	---	---	---	---	---	---	---	---	---
HUNT	110	168	24	61	24	10	0	47	444
HUTCHINSON	15	72	62	25	1	0	0	1	176
IRION	2	3	2	0	0	0	0	0	7
JACK	14	12	11	8	0	0	0	1	46
JACKSON	19	15	21	22	0	6	0	0	83



TEXAS JUVENILE PROBATION COMMISSION
Disposition Activity by County
01/01/2001 thru 12/31/2001

County	Refused/Dismissed/ Diverted/Not Guilty	Supervisory Caution	Deferred Prosecution	Adjudicated to Probation	Modified Probation	Adjudicated to TYC	Certified as Adult	Consolidated Cases	Total Dispositions
JASPER	13	11	22	26	4	5	0	6	87
JEFF DAVIS	1	0	0	0	0	0	0	0	1
JEFFERSON	411	649	272	215	97	83	11	13	1,751
JIM HOGG	96	0	13	5	0	0	0	0	114
JIM WELLS	132	120	149	16	4	0	0	38	459
JOHNSON	85	112	111	95	22	6	1	23	455
JONES	6	13	19	6	0	2	0	5	51
KARNES	58	23	35	24	0	2	0	3	145
KAUFMAN	63	127	64	48	4	4	0	4	314
KENDALL	15	24	19	25	0	1	0	3	87
KENEDY	---	---	---	---	---	---	---	---	---
KENT	1	0	0	0	0	0	0	0	1
KERR	103	123	35	105	14	9	0	38	427
KIMBLE	1	1	2	2	2	1	0	1	10
KING	---	---	---	---	---	---	---	---	---
KINNEY	0	1	6	3	0	0	0	0	10
KLEBERG	50	15	35	33	4	4	0	1	142
KNOX	0	0	0	4	0	0	0	0	4
LAMAR	3	10	69	24	2	4	4	11	127
LAMB	10	12	19	16	9	1	1	0	68
LAMPASAS	17	42	54	19	4	2	0	21	159
LASALLE	14	17	39	1	0	0	0	0	71
LAVACA	3	4	9	14	3	2	0	7	42
LEE	1	0	4	27	0	3	0	0	35
LEON	11	10	13	7	0	1	0	0	42
LIBERTY	18	87	127	7	0	4	0	24	267
LIMESTONE	40	3	14	23	4	4	0	15	103
LIPSCOMB	3	1	3	0	1	0	0	0	8
LIVE OAK	11	0	3	19	3	2	0	0	38
LLANO	9	14	20	2	1	0	0	7	53
LOVING	---	---	---	---	---	---	---	---	---
LUBBOCK	444	549	454	254	150	54	0	267	2,172
LYNN	3	2	15	9	0	0	0	1	30
MCCULLOCH	4	4	7	15	2	1	0	1	34
MCLENNAN	471	471	498	356	37	68	2	288	2,191
MCMULLEN	0	0	2	1	1	0	0	0	4
MADISON	2	0	3	9	1	0	0	1	16
MARION	6	5	9	7	0	2	0	2	31
MARTIN	1	26	1	5	4	1	0	0	38
MASON	4	0	13	6	1	0	0	0	24



TEXAS JUVENILE PROBATION COMMISSION
Disposition Activity by County
01/01/2001 thru 12/31/2001

County	Refused/Dismissed/ Diverted/Not Guilty	Supervisory Caution	Deferred Prosecution	Adjudicated to Probation	Modified Probation	Adjudicated to TYC	Certified as Adult	Consolidated Cases	Total Dispositions
MATAGORDA	34	191	42	41	11	7	0	19	345
MAVERICK	36	116	49	20	2	9	1	3	236
MEDINA	17	103	54	14	0	4	0	9	201
MENARD	2	1	1	4	0	1	0	0	9
MIDLAND	159	204	132	97	31	17	5	108	753
MILAM	13	21	25	38	7	4	0	2	110
MILLS	1	1	1	2	0	0	0	0	5
MITCHELL	6	48	10	5	1	0	0	1	71
MONTAGUE	2	1	17	13	3	0	0	0	36
MONTGOMERY	191	857	21	168	26	47	0	105	1,415
MOORE	31	59	20	26	0	4	0	14	154
MORRIS	33	8	20	8	1	0	0	2	72
MOTLEY	2	2	1	0	0	0	0	0	5
NACOGDOCHES	29	58	55	59	20	6	0	16	243
NAVARRO	28	48	69	34	9	5	0	8	201
NEWTON	1	3	13	7	0	0	0	2	26
NOLAN	49	537	43	44	2	5	0	26	706
NUECES	856	1,215	613	306	73	26	0	165	3,254
OCHILTREE	5	0	11	16	0	1	0	0	33
OLDHAM	5	1	0	0	0	1	0	1	8
ORANGE	102	76	59	79	9	12	0	23	360
PALO PINTO	4	24	48	33	6	11	0	14	140
PANOLA	14	12	19	13	2	1	0	0	61
PARKER	31	217	131	48	11	5	0	5	448
PARMER	2	8	6	13	0	1	0	7	37
PECOS	16	48	28	11	6	0	0	0	109
POLK	14	10	48	81	37	10	0	1	201
POTTER	50	572	149	107	47	33	2	141	1,101
PRESIDIO	3	1	1	1	1	0	0	1	8
RAINS	7	10	12	22	3	2	0	0	56
RANDALL	134	154	72	107	31	8	1	10	517
REAGAN	6	4	3	2	0	0	0	0	15
REAL	1	0	11	4	0	0	0	0	16
RED RIVER	23	17	19	7	1	1	0	2	70
REEVES	43	16	23	20	14	1	0	3	120
REFUGIO	19	15	17	8	0	4	0	1	64
ROBERTS	0	0	5	1	0	1	0	0	7
ROBERTSON	6	18	20	28	6	4	1	5	88
ROCKWALL	17	18	52	25	1	1	0	3	117
RUNNELS	11	15	15	8	3	0	0	2	54



TEXAS JUVENILE PROBATION COMMISSION
Disposition Activity by County
01/01/2001 thru 12/31/2001

County	Refused/Dismissed/ Diverted/Not Guilty	Supervisory Caution	Deferred Prosecution	Adjudicated to Probation	Modified Probation	Adjudicated to TYC	Certified as Adult	Consolidated Cases	Total Dispositions
RUSK	17	40	27	24	3	1	0	8	120
SABINE	2	1	4	3	0	0	0	0	10
SAN AUGUSTINE	3	0	3	3	0	1	0	2	12
SAN JACINTO	15	1	14	15	1	4	0	0	50
SAN PATRICIO	75	171	93	60	45	6	1	21	472
SAN SABA	0	3	4	2	1	0	0	1	11
SCHLEICHER	6	3	5	1	0	0	0	0	15
SCURRY	4	16	20	17	4	2	0	8	71
SHACKELFORD	1	3	2	0	0	0	0	0	6
SHELBY	0	11	11	7	1	0	0	1	31
SHERMAN	1	8	0	2	0	1	0	0	12
SMITH	130	177	134	259	67	26	4	135	932
SOMERVELL	9	5	8	13	0	0	0	0	35
STARR	22	76	131	83	0	0	0	2	314
STEPHENS	6	3	14	10	2	0	0	3	38
STERLING	1	0	0	1	0	0	0	0	2
STONEWALL	3	0	0	1	0	0	0	0	4
SUTTON	3	12	5	0	0	0	0	0	20
SWISHER	5	10	8	10	0	2	0	2	37
TARRANT	1,119	3,330	724	1,427	232	158	6	295	7,291
TAYLOR	87	140	319	71	20	15	0	97	749
TERRELL	0	0	0	1	0	0	0	0	1
TERRY	15	28	21	27	3	1	0	16	111
THROCKMORTON	1	0	0	0	0	0	0	0	1
TITUS	24	51	23	11	1	4	0	1	115
TOM GREEN	164	195	197	145	68	8	5	108	890
TRAVIS	1,072	1,537	567	811	185	80	4	0	4,256
TRINITY	10	3	8	7	0	0	0	0	28
TYLER	11	11	20	12	1	0	0	15	70
UPSHUR	25	146	61	13	0	4	0	1	250
UPTON	5	1	6	7	0	0	0	0	19
UVALDE	65	73	28	32	6	3	0	17	224
VAL VERDE	3	77	134	36	0	5	0	0	255
VAN ZANDT	35	136	106	10	0	2	0	23	312
VICTORIA	40	1,040	47	193	6	17	0	0	1,343
WALKER	33	5	37	55	1	9	0	2	142
WALLER	8	12	26	19	1	1	0	5	72
WARD	22	20	24	17	17	0	0	2	102
WASHINGTON	8	39	60	52	2	4	0	11	176
WEBB	187	787	330	314	1	19	1	13	1,652



TEXAS JUVENILE PROBATION COMMISSION
Disposition Activity by County
01/01/2001 thru 12/31/2001

County	Refused/Dismissed/ Diverted/Not Guilty	Supervisory Caution	Deferred Prosecution	Adjudicated to Probation	Modified Probation	Adjudicated to TYC	Certified as Adult	Consolidated Cases	Total Dispositions
WHARTON	42	4	35	47	3	9	0	7	147
WHEELER	1	4	0	2	0	1	0	0	8
WICHITA	180	190	286	124	45	9	0	145	979
WILBARGER	17	4	11	9	0	0	0	0	41
WILLACY	10	6	27	21	3	0	0	3	70
WILLIAMSON	233	240	256	229	51	15	1	94	1,119
WILSON	40	69	79	7	0	1	0	17	213
WINKLER	7	1	13	3	0	0	1	0	25
WISE	21	9	37	43	9	1	0	3	123
WOOD	26	52	9	57	12	2	0	9	167
YOAKUM	9	6	10	18	5	4	0	3	55
YOUNG	16	10	9	15	2	0	0	2	54
ZAPATA	9	67	70	22	0	0	0	0	168
ZAVALA	6	17	29	3	5	1	0	1	62
TOTALS	22,176	28,744	22,659	22,716	4,237	2,498	141	9,613	112,784



Juvenile Probation Supervision Workload Activity STATEWIDE SUMMARY OF 2001 REPORTED ACTIVITY

Item 1. Juveniles Adjudicated to Probation

Beginning of Period		Added to Supv During Period		Left Supv During Period		End of Period	
Cases	Juveniles	Cases	Juveniles	Cases	Juveniles	Cases	Juveniles
24,454	22,243	28,597	20,152	27,869	19,696	25,182	22,699

Unsuccessful Terminations	
Cases	Juveniles
3,880	3,559

Item 2. Juveniles Placed on Deferred Prosecution

Beginning of Period		Added to Supv During Period		Left Supv During Period		End of Period	
Cases	Juveniles	Cases	Juveniles	Cases	Juveniles	Cases	Juveniles
9,425	9,353	23,826	22,764	23,144	22,103	10,107	10,014

Unsuccessful Terminations	
Cases	Juveniles
4,213	4,094

Item 3. Juveniles Supervised Prior to Disposition

Beginning of Period		Added to Supv During Period		Left Supv During Period		End of Period	
Cases	Juveniles	Cases	Juveniles	Cases	Juveniles	Cases	Juveniles
6,551	6,082	38,498	23,390	37,745	22,695	7,304	6,777

Notes:

- ✓ Cases shown as added to supervision include both cases originally filed in a jurisdiction and cases transferred from other jurisdictions in or outside Texas.
- ✓ The numbers of juveniles shown indicate the caseloads on supervision. If a juvenile was added to two supervisions at the same time for two referrals, that juvenile would count as two cases but one juvenile.
- ✓ It is possible that a juvenile may be counted in more than one category.
- ✓ Juveniles on Item 3 include supervisions of conditional release from detention and temporary pre-court monitoring.



TEXAS JUVENILE PROBATION COMMISSION
Supervision Workload Activity by County
01/01/2001 thru 12/31/2001

County	Cases on	---- Cases Added to Supervision ----			----- Cases Leaving Supervision -----			Cases on	Unsuccessful Terminations	
	Supervision 01/01/2001	Adjud Prob	Deifr Pros	All Other	Adjud Prob	Deifr Pros	All Other	Supervision 12/31/2001	Adjud Prob	Deifr Pros
ANDERSON	120	51	76	74	29	69	76	147	2	11
ANDREWS	41	33	32	0	33	25	0	48	7	4
ANGELINA	77	65	70	33	58	69	34	84	30	15
ARANSAS	120	30	55	149	45	44	151	114	9	2
ARCHER	7	2	4	0	5	3	0	5	1	0
ARMSTRONG	1	0	0	0	0	1	0	0	0	0
ATASCOSA	77	43	63	27	43	60	24	83	20	20
AUSTIN	27	10	18	18	13	19	21	20	3	2
BAILEY	9	7	6	0	4	4	0	14	1	0
BANDERA	27	23	38	4	19	24	5	44	2	1
BASTROP	164	94	105	133	126	104	150	116	42	20
BAYLOR	4	8	1	0	5	1	0	7	0	0
BEE	166	38	29	105	73	24	111	130	4	8
BELL	454	232	401	517	289	369	509	437	53	65
BEXAR	2,919	1,721	2,152	307	1,711	2,052	306	3,030	401	572
BLANCO	10	0	6	0	3	8	0	5	0	0
BORDEN	---	---	---	---	---	---	---	---	---	---
BOSQUE	29	16	22	1	17	25	1	25	5	5
BOWIE	72	58	83	0	56	83	0	74	11	14
BRAZORIA	549	433	64	571	333	70	505	709	69	10
BRAZOS	475	197	223	898	311	256	855	371	69	64
BREWSTER	7	3	11	6	1	10	6	10	0	2
BRISCOE	5	2	2	0	2	2	0	5	1	0
BROOKS	27	18	7	2	15	13	1	25	4	2
BROWN	78	71	80	2	68	62	2	99	7	4
BURLESON	40	38	29	22	41	20	22	46	18	8
BURNET	41	37	73	0	17	75	0	59	3	14
CALDWELL	87	110	39	21	104	45	16	92	8	16
CALHOUN	61	36	30	19	51	28	11	56	12	3
CALLAHAN	7	0	20	0	3	11	0	13	0	4
CAMERON	976	454	378	690	461	328	558	1,151	91	58
CAMP	7	1	13	1	3	9	4	6	0	0
CARSON	1	0	0	0	1	0	0	0	0	0
CASS	28	19	28	5	20	29	4	27	2	3
CASTRO	9	10	10	0	6	8	0	15	0	2
CHAMBERS	24	27	0	3	26	0	4	24	1	0
CHEROKEE	146	30	92	130	32	88	155	123	3	11
CHILDRESS	7	1	0	0	3	3	1	1	1	0
CLAY	16	8	7	0	13	4	0	14	4	0
COCHRAN	25	20	4	0	21	5	0	23	1	1



TEXAS JUVENILE PROBATION COMMISSION
Supervision Workload Activity by County
01/01/2001 thru 12/31/2001

County	Cases on	---- Cases Added to Supervision ----			----- Cases Leaving Supervision ----			Cases on	Unsuccessful Terminations	
	Supervision 01/01/2001	Adjud Prob	Deifr Pros	All Other	Adjud Prob	Deifr Pros	All Other	Supervision 12/31/2001	Adjud Prob	Deifr Pros
COKE	5	2	3	0	6	4	0	0	1	0
COLEMAN	20	3	21	0	6	22	0	16	2	3
COLLIN	475	365	477	305	303	428	292	599	55	76
COLLINGSWORTH	3	0	4	7	0	1	7	6	0	0
COLORADO	49	40	26	26	29	30	34	48	10	3
COMAL	133	129	119	0	117	125	0	139	6	15
COMANCHE	15	9	15	0	15	7	0	17	2	1
CONCHO	8	1	2	1	5	3	3	1	2	0
COOKE	32	34	31	0	30	22	0	45	0	2
CORYELL	93	52	99	72	55	107	75	79	15	22
COTTLE	---	---	---	---	---	---	---	---	---	---
CRANE	3	2	1	0	4	0	0	2	0	0
CROCKETT	5	2	4	0	6	0	0	5	1	0
CROSBY	15	8	0	1	15	0	0	9	5	0
CULBERSON	1	0	0	0	1	0	0	0	0	0
DALLAM	18	10	8	3	17	4	6	12	13	4
DALLAS	3,465	2,067	3,423	1,046	1,957	3,256	1,026	3,762	500	754
DAWSON	46	39	32	0	36	35	0	46	21	12
DEAF SMITH	120	73	88	49	61	98	56	115	18	19
DELTA	10	5	9	0	6	9	0	9	2	2
DENTON	758	526	421	312	554	434	349	680	62	31
DEWITT	52	49	36	26	46	21	32	64	3	9
DICKENS	15	3	2	0	8	4	0	8	0	0
DIMMIT	32	7	53	1	11	52	0	30	1	0
DONLEY	1	0	0	0	1	0	0	0	0	0
DUVAL	54	14	17	0	11	48	0	26	3	5
EASTLAND	15	9	11	0	20	9	0	6	6	0
ECTOR	123	91	184	9	87	137	3	180	9	30
EDWARDS	1	2	10	0	1	0	0	12	0	0
ELLIS	139	80	95	86	106	75	79	140	18	15
EL PASO	977	626	383	0	578	461	0	947	109	85
ERATH	32	33	38	11	26	26	7	55	2	4
FALLS	49	28	34	63	34	36	63	41	9	4
FANNIN	40	7	57	24	25	50	13	40	7	9
FAYETTE	16	15	9	8	16	10	6	16	1	3
FISHER	0	0	3	0	0	3	0	0	0	1
FLOYD	31	21	23	0	17	21	0	37	6	4
FOARD	---	---	---	---	---	---	---	---	---	---
FORT BEND	709	444	424	736	454	402	732	725	100	82
FRANKLIN	18	5	16	0	8	14	0	17	1	0



TEXAS JUVENILE PROBATION COMMISSION
Supervision Workload Activity by County
01/01/2001 thru 12/31/2001

County	Cases on	---- Cases Added to Supervision ----			----- Cases Leaving Supervision -----			Cases on	Unsuccessful Terminations	
	Supervision 01/01/2001	Adjud Prob	Deifr Pros	All Other	Adjud Prob	Deifr Pros	All Other	Supervision 12/31/2001	Adjud Prob	Deifr Pros
FREESTONE	26	8	11	0	11	15	0	19	1	2
FRIO	39	10	47	0	13	25	0	58	3	3
GAINES	30	17	16	0	21	16	0	26	1	3
GALVESTON	501	360	272	0	373	271	0	489	77	52
GARZA	20	9	9	5	14	12	4	13	5	5
GILLESPIE	11	0	21	0	1	29	0	2	0	3
GLASSCOCK	---	---	---	---	---	---	---	---	---	---
GOLIAD	27	16	16	6	19	17	6	23	10	6
GONZALES	48	39	48	17	30	49	10	63	10	10
GRAY	69	54	47	0	51	38	0	81	11	9
GRAYSON	138	78	79	21	79	111	21	105	21	20
GREGG	268	137	208	2	195	222	3	195	59	50
GRIMES	68	9	22	37	33	22	40	41	3	1
GUADALUPE	184	92	218	62	101	215	49	191	47	70
HALE	129	114	44	2	102	39	2	146	2	3
HALL	4	0	0	0	1	2	0	1	0	0
HAMILTON	6	2	6	0	4	1	0	9	0	0
HANSFORD	5	2	1	0	3	2	0	3	0	0
HARDEMAN	---	---	---	---	---	---	---	---	---	---
HARDIN	55	52	55	5	47	59	5	56	24	14
HARRIS	9,224	9,701	2,004	25,848	9,189	1,956	25,734	9,898	20	109
HARRISON	129	84	98	106	57	59	118	183	19	10
HARTLEY	2	5	3	4	4	3	3	4	0	3
HASKELL	4	5	0	0	5	0	0	4	2	0
HAYS	219	160	200	123	153	185	126	238	15	21
HEMPHILL	6	3	9	0	1	5	0	12	0	2
HENDERSON	88	49	60	24	44	55	24	98	1	6
HIDALGO	719	384	490	324	343	485	339	750	171	131
HILL	64	66	36	48	51	32	48	83	19	9
HOCKLEY	30	41	8	0	34	12	0	33	11	1
HOOD	89	55	105	0	71	98	0	80	17	15
HOPKINS	55	60	57	0	60	54	0	58	11	26
HOUSTON	16	14	9	5	12	3	6	23	3	2
HOWARD	70	28	33	40	50	28	41	52	6	3
HUDSPETH	---	---	---	---	---	---	---	---	---	---
HUNT	64	77	24	0	56	21	0	88	10	6
HUTCHINSON	55	31	62	29	30	66	21	60	12	13
IRION	0	0	2	1	0	2	1	0	0	0
JACK	13	11	11	0	14	8	0	13	1	0
JACKSON	42	25	21	0	35	23	0	30	7	3



TEXAS JUVENILE PROBATION COMMISSION
Supervision Workload Activity by County
01/01/2001 thru 12/31/2001

County	Cases on	---- Cases Added to Supervision ----			----- Cases Leaving Supervision -----			Cases on	Unsuccessful Terminations	
	Supervision 01/01/2001	Adjud Prob	Deifr Pros	All Other	Adjud Prob	Deifr Pros	All Other	Supervision 12/31/2001	Adjud Prob	Deifr Pros
JASPER	59	26	22	0	42	26	1	38	7	3
JEFF DAVIS	5	0	0	0	4	0	0	1	0	0
JEFFERSON	493	142	235	105	147	147	114	567	49	38
JIM HOGG	27	5	12	5	6	21	5	17	0	2
JIM WELLS	107	25	154	105	28	113	93	157	9	32
JOHNSON	209	130	119	12	172	126	18	154	13	3
JONES	27	10	21	11	16	24	9	20	5	1
KARNES	44	27	37	22	20	45	23	42	12	17
KAUFMAN	40	65	64	0	50	49	0	70	14	13
KENDALL	25	29	23	0	23	26	0	28	5	2
KENEDY	---	---	---	---	---	---	---	---	---	---
KENT	---	---	---	---	---	---	---	---	---	---
KERR	99	107	35	5	95	56	8	87	22	17
KIMBLE	27	3	2	4	10	1	6	19	1	0
KING	---	---	---	---	---	---	---	---	---	---
KINNEY	2	4	2	0	3	0	0	5	0	0
KLEBERG	64	40	35	16	57	38	9	51	13	1
KNOX	1	4	0	0	1	0	0	4	0	0
LAMAR	47	26	69	0	36	56	0	50	4	2
LAMB	57	17	21	12	35	22	11	39	7	5
LAMPASAS	36	22	54	21	18	56	20	39	4	12
LASALLE	15	2	44	6	1	38	3	25	0	7
LAVACA	18	14	9	7	13	11	10	14	3	2
LEE	35	28	4	1	20	6	1	41	8	2
LEON	9	11	13	0	9	10	0	14	4	3
LIBERTY	63	22	128	0	20	124	1	68	2	2
LIMESTONE	51	26	19	51	20	23	45	59	6	2
LIPSCOMB	8	1	3	0	2	6	0	4	1	0
LIVE OAK	29	22	4	5	22	7	1	30	2	1
LLANO	12	6	20	0	6	23	0	9	1	4
LOVING	---	---	---	---	---	---	---	---	---	---
LUBBOCK	600	280	466	54	265	421	54	660	75	94
LYNN	20	9	15	3	13	12	2	20	1	4
MCCULLOCH	22	15	8	19	8	9	20	27	1	0
MCLENNAN	870	379	507	439	317	412	581	885	67	56
MCMULLEN	2	1	2	0	1	1	0	3	0	0
MADISON	12	16	3	0	6	10	0	15	0	1
MARION	10	8	12	0	7	11	0	12	1	1
MARTIN	6	12	1	1	11	1	1	7	6	0
MASON	3	4	14	0	1	14	0	6	0	1



TEXAS JUVENILE PROBATION COMMISSION
Supervision Workload Activity by County
01/01/2001 thru 12/31/2001

County	Cases on	---- Cases Added to Supervision ----			----- Cases Leaving Supervision -----			Cases on	Unsuccessful Terminations	
	Supervision 01/01/2001	Adjud Prob	Deifr Pros	All Other	Adjud Prob	Deifr Pros	All Other	Supervision 12/31/2001	Adjud Prob	Deifr Pros
MATAGORDA	84	45	45	9	54	32	14	83	15	5
MAVERICK	67	23	51	30	37	52	29	53	12	20
MEDINA	58	16	53	30	16	62	32	47	4	22
MENARD	8	4	1	4	3	1	4	9	1	0
MIDLAND	211	109	132	29	148	133	21	179	35	21
MILAM	57	47	28	47	36	25	63	55	7	2
MILLS	2	3	1	0	1	1	0	4	0	0
MITCHELL	13	5	10	0	6	11	0	11	1	2
MONTAGUE	17	17	18	0	17	8	0	27	2	2
MONTGOMERY	251	223	25	128	176	24	142	285	58	4
MOORE	46	26	20	5	39	24	1	33	9	6
MORRIS	26	15	22	0	16	26	0	21	4	1
MOTLEY	8	0	1	0	4	2	0	3	0	0
NACOGDOCHES	90	65	55	0	76	52	0	82	13	6
NAVARRO	81	37	73	1	62	62	1	67	9	5
NEWTON	8	9	13	0	6	14	0	10	0	1
NOLAN	46	46	43	1	29	61	1	45	13	17
NUECES	553	344	621	1	362	533	1	623	137	128
OCHILTREE	19	17	12	4	13	7	6	26	0	2
OLDHAM	2	0	0	2	2	0	2	0	0	0
ORANGE	109	91	63	0	111	55	0	97	19	6
PALO PINTO	47	40	51	4	25	60	4	53	15	19
PANOLA	21	15	20	0	12	18	0	26	3	8
PARKER	125	73	134	3	77	151	3	104	8	14
PARMER	9	14	6	0	7	4	0	18	3	0
PECOS	53	12	28	41	24	16	46	48	4	4
POLK	72	91	49	76	73	53	66	96	15	14
POTTER	310	164	107	93	135	119	123	297	41	32
PRESIDIO	7	4	2	8	3	2	6	10	1	0
RAINS	19	23	14	0	18	13	0	25	5	7
RANDALL	174	121	78	62	119	64	77	175	17	15
REAGAN	7	2	4	8	2	2	9	8	0	1
REAL	2	4	11	0	2	7	0	8	0	1
RED RIVER	13	8	19	0	5	15	0	20	1	1
REEVES	46	23	24	34	35	21	38	33	3	4
REFUGIO	20	13	17	10	8	20	11	21	3	2
ROBERTS	2	1	5	0	1	6	0	1	0	0
ROBERTSON	57	33	21	29	36	28	36	40	15	8
ROCKWALL	45	30	54	27	35	49	25	47	16	11
RUNNELS	23	11	15	13	13	20	11	18	1	1



TEXAS JUVENILE PROBATION COMMISSION
Supervision Workload Activity by County
01/01/2001 thru 12/31/2001

County	Cases on	---- Cases Added to Supervision ----			----- Cases Leaving Supervision -----			Cases on	Unsuccessful Terminations	
	Supervision 01/01/2001	Adjud Prob	Deifr Pros	All Other	Adjud Prob	Deifr Pros	All Other	Supervision 12/31/2001	Adjud Prob	Deifr Pros
RUSK	49	31	30	23	32	33	21	47	5	4
SABINE	10	5	4	0	9	5	0	5	0	0
SAN AUGUSTINE	6	3	4	0	4	3	0	6	0	0
SAN JACINTO	21	18	14	30	12	12	20	39	4	1
SAN PATRICIO	266	62	94	251	67	99	257	250	3	15
SAN SABA	12	3	4	0	5	7	0	7	1	1
SCHLEICHER	4	1	5	2	3	6	2	1	1	0
SCURRY	41	17	20	0	14	21	0	43	2	3
SHACKELFORD	3	0	2	1	2	2	0	2	0	1
SHELBY	9	9	11	2	4	9	1	17	0	0
SHERMAN	5	2	0	0	4	1	0	2	3	1
SMITH	449	281	141	38	369	195	41	304	30	21
SOMERVELL	14	10	8	0	9	11	0	12	2	1
STARR	138	88	131	0	68	138	19	132	1	0
STEPHENS	16	10	14	6	11	12	7	16	2	2
STERLING	0	1	0	3	0	0	3	1	0	0
STONEWALL	1	1	1	0	1	0	0	2	0	0
SUTTON	4	0	5	1	2	5	0	3	0	0
SWISHER	17	12	8	0	15	9	0	13	3	2
TARRANT	1,677	1,550	734	0	1,363	750	0	1,848	145	110
TAYLOR	246	85	322	13	110	318	8	230	34	89
TERRELL	1	0	0	0	1	0	0	0	0	0
TERRY	50	31	23	0	21	42	0	41	8	9
THROCKMORTON	1	2	0	0	3	0	0	0	1	0
TITUS	45	15	23	3	31	25	3	27	4	0
TOM GREEN	324	165	197	152	165	236	123	314	42	45
TRAVIS	1,327	755	1,333	1,556	774	1,328	1,170	1,699	0	142
TRINITY	14	13	8	17	17	7	12	16	4	0
TYLER	25	14	20	1	7	32	1	20	2	0
UPSHUR	59	17	67	61	22	82	56	44	6	19
UPTON	3	6	6	11	1	6	2	17	0	0
UVALDE	68	35	32	6	32	59	6	44	6	9
VAL VERDE	117	35	116	0	49	75	0	144	0	4
VAN ZANDT	54	19	107	0	16	97	0	67	5	24
VICTORIA	297	209	48	91	189	56	94	306	61	21
WALKER	95	66	38	76	63	51	92	69	29	9
WALLER	19	28	28	6	23	22	4	32	12	8
WARD	38	17	24	34	15	21	33	44	0	8
WASHINGTON	67	66	62	41	60	66	33	77	16	15
WEBB	833	321	331	886	317	367	711	976	30	31



TEXAS JUVENILE PROBATION COMMISSION
Supervision Workload Activity by County
01/01/2001 thru 12/31/2001

County	Cases on Supervision 01/01/2001	---- Cases Added to Supervision ----			----- Cases Leaving Supervision ----			Cases on Supervision 12/31/2001	Unsuccessful Terminations	
		Adjud Prob	Defr Pros	All Other	Adjud Prob	Defr Pros	All Other		Adjud Prob	Defr Pros
WHARTON	65	59	35	0	60	45	0	54	11	13
WHEELER	7	2	0	0	0	6	0	3	0	0
WICHITA	249	142	289	190	112	249	158	351	19	30
WILBARGER	18	11	11	0	13	13	0	14	1	2
WILLACY	35	20	31	16	14	30	22	36	1	6
WILLIAMSON	338	248	256	37	195	269	37	378	43	49
WILSON	64	11	79	25	14	77	28	60	9	19
WINKLER	12	4	15	0	7	16	1	7	0	1
WISE	52	66	37	0	43	42	0	70	4	6
WOOD	42	62	11	0	49	12	0	54	5	2
YOAKUM	38	18	10	25	12	22	21	36	5	3
YOUNG	22	21	9	10	22	9	7	24	1	0
ZAPATA	44	20	74	48	21	72	28	65	10	12
ZAVALA	22	3	30	0	8	32	0	15	2	8
TOTALS	40,430	28,597	23,826	38,498	27,869	23,144	37,745	42,593	3,880	4,213



Juvenile Probation Detention and Residential Placement Activity STATEWIDE SUMMARY OF 2001 REPORTED ACTIVITY

	Alleged Delinquent Behavior																	Violation of Probation	
	Felony Offenses											Class A & B Misdemeanors					Contp of Mags Order		Total Delinq
	Hom	Att Hom	Sex Aslt	Robbery	Agg Aslt	Burg	Theft	MV Theft	Drug Offs	Weap Viols	Other Fels	Weap Viols	Aslt	Theft	Drug Offs	Other Misd			
Total Secure Det	53	29	1,166	1,032	2,720	3,404	918	2,083	1,920	529	1,557	426	5,212	4,020	3,514	6,268	2,191	37,042	12,173
< 24 Hours	2	1	193	168	578	949	240	531	524	133	421	110	1,996	1,911	1,452	2,213	1,080	12,502	2,169
24 Hrs – 10 Days	13	9	417	328	1,182	1,458	368	814	799	250	693	176	2,173	1,310	1,465	2,635	850	14,940	5,653
> 10 Days	38	19	556	536	960	997	310	738	597	146	443	140	1,043	799	597	1,420	261	9,600	4,351
Emerg Shelter	1	0	9	17	36	83	46	93	34	11	13	18	76	98	65	94	104	798	378
Foster Care	0	0	7	1	15	27	1	10	1	2	7	2	20	14	8	13	3	131	47
Resid Treatment	0	0	122	55	156	257	52	151	136	20	79	28	305	270	272	431	67	2,401	1,133
Secure Correc	0	2	128	110	173	347	66	206	165	28	88	38	231	309	226	491	49	2,657	1,432

	Alleged CINS Behavior										
	Status Only			Other than Status Only							Total CINS
	Truancy	Runaway	AltEd Expl	Theft	Disd Cond	Inhal	DUID	Liqr Laws	Contp @Risk	Other CINS	
Total Secure Det	123	1,302	251	40	338	1	10	99	2	633	2,799
< 24 Hours	86	942	109	19	190	0	2	51	1	247	1,647
24 Hrs – 10 Days	33	312	120	16	115	1	4	32	0	282	915
> 10 Days	4	48	22	5	33	0	4	16	1	104	237
Emerg Shelter	18	649	14	8	51	0	0	2	0	11	753
Foster Care	2	9	0	0	5	0	0	0	0	1	17
Resid Treatment	19	46	16	9	8	2	0	7	0	12	119
Secure Correc	3	18	20	2	5	1	1	3	0	13	66
Other											

Grand Total Delinquent Violation of Probation & CINS
52,014
16,318
21,508
14,188

1,929
195
3,653
4,155



TEXAS JUVENILE PROBATION COMMISSION
Secure Detention & Residential Placement Activity
01/01/2001 thru 12/31/2001

County	----- Number of Referrals in Secure Detention -----				Total	% of Refs Detained**	Residential Placements
	Delinq & VOP Felony	Behavior Other	CINS Status	Behavior* Other			
ANDERSON	70	100	14	23	207	65.3%	6
ANDREWS	25	39	0	4	68	51.3%	16
ANGELINA	51	64	5	0	120	33.9%	17
ARANSAS	18	92	0	0	110	35.5%	27
ARCHER	1	4	0	0	5	44.4%	3
ARMSTRONG	---	---	---	---	---	---	---
ATASCOSA	51	54	0	4	109	54.5%	11
AUSTIN	10	13	1	0	24	35.7%	12
BAILEY	6	7	0	0	13	46.2%	6
BANDERA	16	18	4	2	40	50.0%	4
BASTROP	54	62	5	6	127	33.3%	11
BAYLOR	4	0	0	0	4	13.3%	3
BEE	33	73	1	0	107	42.9%	25
BELL	149	441	25	13	628	35.3%	90
BEXAR	520	1,556	16	45	2,137	23.8%	300
BLANCO	4	4	0	0	8	66.7%	1
BORDEN	---	---	---	---	---	---	---
BOSQUE	5	5	0	0	10	20.0%	7
BOWIE	132	169	33	89	423	48.9%	31
BRAZORIA	292	1,158	68	222	1,740	60.8%	102
BRAZOS	95	1,271	103	21	1,490	71.8%	63
BREWSTER	2	9	0	0	11	37.9%	0
BRISCOE	1	0	0	0	1	6.7%	10
BROOKS	17	6	0	0	23	28.8%	18
BROWN	14	33	1	2	50	17.8%	2
BURLESON	19	24	2	0	45	18.9%	15
BURNET	18	43	5	0	66	36.4%	21
CALDWELL	41	109	5	0	155	49.7%	17
CALHOUN	20	19	0	6	45	25.7%	5
CALLAHAN	3	9	0	0	12	32.4%	0
CAMERON	551	273	32	2	858	41.1%	98
CAMP	2	6	0	0	8	29.6%	0
CARSON	---	---	---	---	---	---	---
CASS	7	9	0	0	16	10.8%	8
CASTRO	22	5	2	2	31	38.8%	6
CHAMBERS	---	---	---	---	---	---	---
CHEROKEE	41	86	0	1	128	55.0%	19
CHILDRESS	2	0	0	0	2	66.7%	0
CLAY	9	7	0	0	16	44.4%	8
COCHRAN	2	3	0	1	6	25.0%	6



TEXAS JUVENILE PROBATION COMMISSION
Secure Detention & Residential Placement Activity
01/01/2001 thru 12/31/2001

County	----- Number of Referrals in Secure Detention -----				Total	% of Refs Detained**	Residential Placements
	Delinq & VOP Felony	Behavior Other	CINS Status	Behavior* Other			
COKE	---	---	---	---	---	---	---
COLEMAN	12	14	0	0	26	56.5%	2
COLLIN	280	593	103	19	995	66.4%	118
COLLINGSWORTH	8	0	0	0	8	72.7%	0
COLORADO	25	30	0	0	55	46.2%	6
COMAL	61	73	5	3	142	25.4%	49
COMANCHE	5	4	0	0	9	20.5%	4
CONCHO	1	0	0	0	1	14.3%	2
COOKE	7	15	0	0	22	21.6%	7
CORYELL	42	20	2	0	64	22.8%	10
COTTLE	---	---	---	---	---	---	---
CRANE	6	0	0	0	6	14.3%	0
CROCKETT	2	0	0	0	2	8.3%	0
CROSBY	1	4	0	0	5	28.6%	1
CULBERSON	1	1	0	0	2	28.6%	0
DALLAM	3	8	0	0	11	7.6%	3
DALLAS	1,891	2,982	28	30	4,931	40.1%	2,407
DAWSON	23	112	0	6	141	55.3%	3
DEAF SMITH	20	14	2	2	38	10.9%	92
DELTA	4	10	1	2	17	44.8%	5
DENTON	196	838	150	1	1,185	64.2%	71
DEWITT	47	96	0	1	144	64.7%	6
DICKENS	---	---	---	---	---	---	---
DIMMIT	10	29	0	2	41	43.8%	1
DONLEY	---	---	---	---	---	---	---
DUVAL	6	25	0	7	38	23.0%	4
EASTLAND	13	1	1	0	15	25.5%	3
ECTOR	123	587	12	13	735	86.2%	110
EDWARDS	1	0	0	0	1	7.1%	0
ELLIS	169	211	1	0	381	52.8%	14
EL PASO	644	1,132	1	0	1,777	60.6%	223
ERATH	14	4	0	0	18	14.7%	10
FALLS	31	42	0	0	73	53.4%	7
FANNIN	16	51	0	1	68	39.2%	2
FAYETTE	6	9	1	0	16	36.8%	6
FISHER	5	3	0	0	8	33.3%	1
FLOYD	4	5	0	0	9	12.3%	49
FOARD	---	---	---	---	---	---	---
FORT BEND	211	498	31	10	750	45.3%	64
FRANKLIN	9	6	0	0	15	26.2%	2



TEXAS JUVENILE PROBATION COMMISSION
Secure Detention & Residential Placement Activity
01/01/2001 thru 12/31/2001

County	----- Number of Referrals in Secure Detention -----				Total	% of Refs Detained**	Residential Placements
	Delinq & VOP Felony	Behavior Other	CINS Status	Behavior* Other			
FREESTONE	10	10	1	0	21	67.7%	1
FRIO	13	25	2	3	43	28.9%	4
GAINES	3	4	0	0	7	10.3%	6
GALVESTON	325	735	12	3	1,075	69.1%	59
GARZA	1	12	0	3	16	55.2%	2
GILLESPIE	0	5	1	0	6	17.6%	0
GLASSCOCK	---	---	---	---	---	---	---
GOLIAD	12	16	4	0	32	30.4%	4
GONZALES	26	18	1	0	45	30.2%	9
GRAY	11	7	2	1	21	10.6%	6
GRAYSON	77	122	8	5	212	54.2%	13
GREGG	124	246	15	5	390	42.5%	21
GRIMES	18	10	0	0	28	30.6%	2
GUADALUPE	85	146	7	14	252	28.4%	63
HALE	24	73	0	1	98	41.8%	24
HALL	---	---	---	---	---	---	---
HAMILTON	0	1	0	0	1	4.8%	0
HANSFORD	0	1	0	0	1	25.0%	0
HARDEMAN	---	---	---	---	---	---	---
HARDIN	36	123	5	31	195	56.0%	10
HARRIS	2,125	3,751	148	487	6,511	32.9%	2,677
HARRISON	67	244	35	9	355	83.8%	39
HARTLEY	0	0	0	2	2	11.8%	4
HASKELL	3	9	0	0	12	58.3%	1
HAYS	102	260	18	1	381	54.5%	41
HEMPHILL	7	5	0	0	12	27.6%	0
HENDERSON	52	135	8	3	198	55.2%	20
HIDALGO	254	321	24	8	607	29.1%	290
HILL	18	31	1	0	50	33.6%	6
HOCKLEY	12	12	0	0	24	19.5%	15
HOOD	38	52	4	1	95	28.1%	15
HOPKINS	23	66	15	1	105	46.2%	14
HOUSTON	8	9	0	0	17	15.7%	3
HOWARD	57	127	7	0	191	42.4%	7
HUDSPETH	---	---	---	---	---	---	---
HUNT	79	250	0	0	329	73.5%	22
HUTCHINSON	11	37	2	4	54	25.4%	3
IRION	---	---	---	---	---	---	---
JACK	4	0	0	0	4	9.1%	3
JACKSON	9	16	4	0	29	43.9%	0



TEXAS JUVENILE PROBATION COMMISSION
Secure Detention & Residential Placement Activity
01/01/2001 thru 12/31/2001

County	----- Number of Referrals in Secure Detention -----				Total	% of Refs Detained**	Residential Placements
	Delinq & VOP Felony	Behavior Other	CINS Status	Behavior* Other			
JASPER	29	23	1	0	53	50.0%	17
JEFF DAVIS	0	1	0	0	1	100.0%	0
JEFFERSON	69	272	0	0	341	16.3%	76
JIM HOGG	14	5	0	0	19	14.7%	1
JIM WELLS	48	70	7	1	126	30.8%	13
JOHNSON	68	145	3	1	217	46.6%	18
JONES	8	14	0	0	22	23.5%	7
KARNES	20	16	0	0	36	29.5%	7
KAUFMAN	63	61	0	0	124	38.9%	13
KENDALL	5	12	4	0	21	25.0%	5
KENEDY	---	---	---	---	---	---	---
KENT	---	---	---	---	---	---	---
KERR	50	208	37	6	301	71.0%	16
KIMBLE	4	7	0	0	11	90.9%	1
KING	---	---	---	---	---	---	---
KINNEY	0	2	0	0	2	25.0%	0
KLEBERG	33	26	0	0	59	30.4%	3
KNOX	---	---	---	---	---	---	---
LAMAR	34	28	0	2	64	35.5%	4
LAMB	9	16	1	0	26	36.5%	3
LAMPASAS	17	47	5	0	69	37.6%	9
LASALLE	16	14	1	3	34	36.1%	0
LAVACA	13	6	0	0	19	39.0%	2
LEE	6	9	0	0	15	32.6%	0
LEON	5	1	0	0	6	11.6%	1
LIBERTY	29	24	1	0	54	20.9%	3
LIMESTONE	29	52	3	3	87	74.6%	3
LIPSCOMB	---	---	---	---	---	---	---
LIVE OAK	18	24	0	0	42	74.5%	15
LLANO	12	7	4	0	23	45.5%	6
LOVING	---	---	---	---	---	---	---
LUBBOCK	314	800	10	6	1,130	54.4%	139
LYNN	9	6	3	0	18	56.7%	0
MCCULLOCH	10	6	0	0	16	41.7%	2
MCLENNAN	310	1,074	18	6	1,408	72.8%	344
MCMULLEN	0	1	0	0	1	25.0%	0
MADISON	1	1	0	0	2	16.7%	1
MARION	11	3	5	0	19	60.0%	1
MARTIN	6	21	2	0	29	54.3%	2
MASON	1	0	0	3	4	8.7%	0



TEXAS JUVENILE PROBATION COMMISSION
Secure Detention & Residential Placement Activity
01/01/2001 thru 12/31/2001

County	----- Number of Referrals in Secure Detention -----				Total	% of Refs Detained**	Residential Placements
	Delinq & VOP Felony	Behavior Other	CINS Status	Behavior* Other			
MATAGORDA	22	60	1	3	86	24.1%	10
MAVERICK	46	25	1	7	79	29.4%	21
MEDINA	54	52	10	1	117	64.0%	15
MENARD	7	1	0	0	8	88.9%	0
MIDLAND	173	617	2	2	794	95.8%	24
MILAM	27	41	0	0	68	77.4%	4
MILLS	---	---	---	---	---	---	---
MITCHELL	3	2	0	0	5	6.3%	3
MONTAGUE	2	6	0	0	8	17.1%	8
MONTGOMERY	168	285	1	1	455	27.5%	33
MOORE	10	13	0	3	26	15.5%	7
MORRIS	21	11	0	0	32	36.5%	1
MOTLEY	---	---	---	---	---	---	---
NACOGDOCHES	56	67	6	6	135	47.6%	35
NAVARRO	39	11	0	0	50	20.8%	12
NEWTON	7	7	4	0	18	45.5%	1
NOLAN	29	34	1	0	64	8.3%	3
NUECES	245	846	13	16	1,120	35.6%	77
OCHILTREE	0	4	0	0	4	10.3%	0
OLDHAM	6	0	0	0	6	75.0%	3
ORANGE	72	114	3	0	189	46.5%	18
PALO PINTO	19	8	1	0	28	17.6%	10
PANOLA	8	33	0	0	41	56.1%	12
PARKER	21	63	6	0	90	20.1%	18
PARMER	7	1	0	0	8	15.6%	4
PECOS	26	55	6	0	87	72.5%	0
POLK	39	48	0	0	87	37.0%	18
POTTER	142	363	0	2	507	46.1%	90
PRESIDIO	3	4	0	0	7	77.8%	1
RAINS	9	15	0	0	24	47.9%	2
RANDALL	35	178	4	0	217	43.8%	56
REAGAN	3	1	0	0	4	20.0%	0
REAL	1	0	0	0	1	6.7%	0
RED RIVER	2	6	0	0	8	9.2%	1
REEVES	5	30	6	2	43	38.7%	6
REFUGIO	4	10	0	2	16	17.8%	3
ROBERTS	---	---	---	---	---	---	---
ROBERTSON	16	28	0	0	44	64.2%	11
ROCKWALL	31	27	0	0	58	39.2%	11
RUNNELS	12	10	1	0	23	29.6%	8



TEXAS JUVENILE PROBATION COMMISSION
Secure Detention & Residential Placement Activity
01/01/2001 thru 12/31/2001

County	----- Number of Referrals in Secure Detention -----				Total	% of Refs Detained**	Residential Placements
	Delinq & VOP Felony	Behavior Other	CINS Status	Behavior* Other			
RUSK	26	43	2	8	79	34.1%	1
SABINE	0	2	0	0	2	25.0%	0
SAN AUGUSTINE	3	1	0	0	4	27.3%	0
SAN JACINTO	32	18	0	0	50	66.2%	1
SAN PATRICIO	61	140	0	1	202	35.7%	39
SAN SABA	1	3	0	0	4	26.7%	6
SCHLEICHER	1	0	0	0	1	6.7%	2
SCURRY	1	1	1	1	4	5.0%	4
SHACKELFORD	3	0	0	0	3	37.5%	0
SHELBY	12	3	2	0	17	48.5%	2
SHERMAN	2	5	0	0	7	35.7%	2
SMITH	130	360	16	6	512	54.6%	70
SOMERVELL	5	9	0	1	15	42.9%	3
STARR	55	72	1	3	131	41.4%	8
STEPHENS	7	6	0	0	13	13.5%	7
STERLING	1	0	0	0	1	50.0%	1
STONEWALL	---	---	---	---	---	---	---
SUTTON	2	2	3	0	7	35.0%	0
SWISHER	12	8	0	0	20	27.3%	2
TARRANT	748	1,873	11	18	2,650	34.4%	75
TAYLOR	146	336	0	3	485	53.0%	53
TERRELL	---	---	---	---	---	---	---
TERRY	16	24	2	1	43	34.6%	13
THROCKMORTON	---	---	---	---	---	---	---
TITUS	16	15	0	0	31	25.4%	6
TOM GREEN	97	278	6	0	381	38.4%	122
TRAVIS	449	1,714	29	70	2,262	49.0%	181
TRINITY	16	3	1	0	20	58.3%	0
TYLER	7	11	0	0	18	26.9%	2
UPSHUR	20	31	2	2	55	18.7%	2
UPTON	6	4	0	0	10	39.1%	0
UVALDE	24	31	1	1	57	23.4%	8
VAL VERDE	36	60	0	0	96	43.0%	1
VAN ZANDT	56	86	1	0	143	45.5%	13
VICTORIA	52	653	0	1	706	52.2%	89
WALKER	51	33	0	0	84	62.1%	9
WALLER	13	5	1	3	22	23.1%	2
WARD	2	28	2	0	32	24.5%	4
WASHINGTON	19	27	3	5	54	21.1%	14
WEBB	300	652	130	1	1,083	51.5%	59



TEXAS JUVENILE PROBATION COMMISSION
Secure Detention & Residential Placement Activity
01/01/2001 thru 12/31/2001

County	----- Number of Referrals in Secure Detention -----				Total	% of Refs Detained**	Residential Placements
	Delinq & VOP Felony	Behavior Other	CINS Status	Behavior* Other			
WHARTON	29	29	0	0	58	35.9%	5
WHEELER	3	0	0	0	3	9.1%	0
WICHITA	201	429	1	0	631	56.6%	71
WILBARGER	3	6	0	0	9	17.1%	3
WILLACY	12	6	0	0	18	25.4%	6
WILLIAMSON	173	495	51	45	764	61.1%	99
WILSON	16	46	0	0	62	20.3%	5
WINKLER	3	2	2	0	7	31.8%	2
WISE	12	21	0	0	33	23.2%	7
WOOD	16	43	0	2	61	32.5%	9
YOAKUM	13	15	2	0	30	50.9%	8
YOUNG	4	11	0	0	15	16.9%	4
ZAPATA	20	14	0	3	37	16.5%	20
ZAVALA	9	5	0	1	15	22.6%	3
TOTALS	15,411	33,804	1,425	1,374	52,014	41.3%	9,932

* Detentions and placements for Alternative Education Expulsion are included in the "Other CINS" category in the Activity by County tables only. Elsewhere in this document, they are counted as "Status" offenses.

** The percent of referrals detained is calculated as the number of referrals detained at least one time, divided by the total number of referrals, times 100. If a juvenile is detained more than one time for a particular referral, it is only counted once in the rate calculation.

